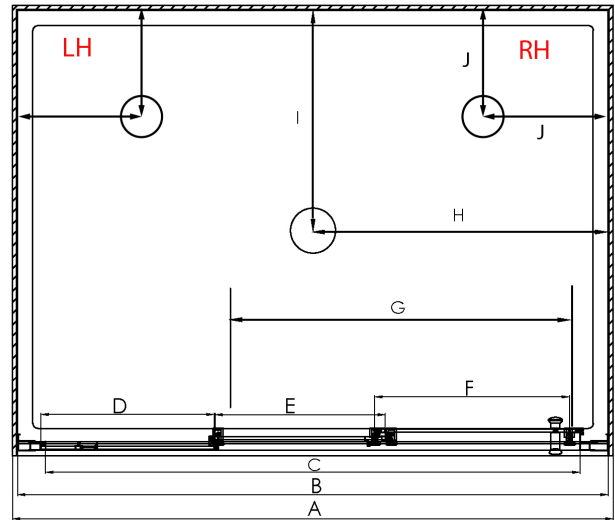


AQUERO ALCOVE **STACKER DOOR** SHOWERS



Pictured above - Aquero 900 x 900 3 Sided Alcove Flat Wall Silva
SKU S900AQASIFWS

DESCRIPTION

The Aquero Square Alcove range of showers can be purchased as a complete shower cubicle including Acrylic Tray, Wall Liner and Door Pack.

The Door Pack and Tray can also be purchased as individual items for installation on a tiled floor and/or tiled wall.

FEATURES

- Low profile tray with 40mm upstand
- 1950mm high glass
- Total OVERALL height 2020mm
- Removeable drip strip and gutter
- 3 panel sliding door - silva finish with adjustable rollers
- Magnetic strip on closing edge of door
- Auto glide sliding door feature
- High quality stainless/alloy fittings and hardware
- Door is reversible and can open left to right or right to left

LEGEND

Dimension	Description		
		900mm	1000mm
A	Tray external dimension	900mm	1000mm
B	Door frame outer dimension (including receivers)	875mm	975mm
C	Door frame inner dimension	768mm	868mm
D	Fixed glass panel width	246mm	280mm
E	Centre sliding panel width	240mm	273mm
F	Outer sliding panel width	289mm	322mm
G	Overall door opening width	417mm	484mm
H	Waste position from outside of tray (centre waste)	450mm	500mm
I	Waste position from outside of tray (centre waste)	450mm	500mm
J	Waste position from outside of tray (corner waste)	250mm	n/a

ORDERING CODES

Product Description	900mm	1000mm
Square Alcove 3 Sided Flat Wall Silva 3 Panel Sliding Stacker Door	S900AQASIFWS	S1000AQASIFWS
Square Alcove 3 Sided Moulded Back Wall Silva 3 Panel Sliding Stacker Door	S900AQASIMWS	S1000AQASIMWS
Additional code for Corner Waste Tray (specify LH or RH)	CNRWOPTION (LH OR RH)	N/A
Flat Alcove Tray Rear Centre Waste Only	TFS9X9ALCCW	TFS1000ALCCW
Flat Alcove Tray LH Corner Waste Only	TFS9X9ALCLHCNR	N/A
Flat Alcove Tray RH Corner Waste Only	TF59X9ALCRHCNR	N/A
Flat Alcove Wall Liner Only White 1950mm High	LB9X9X9FW3S195	LB1X1X1FW3S195
Moulded Back Wall Wall Liner Only White 1950mm High	LB9X9X9MW3S195	LB1X1X1MW3S195
3 Panel Sliding Stacker Door Only Silva 1950mm High	D3PS900SI195	D3PS1000SI195

WARRANTY INFORMATION

All bathroomware products supplied by Nouera Shower Systems carry our Quality Assurance and Product Warranty. We use the highest quality materials available and manufacture these in accordance with New Zealand specifications and requirements to ensure that all products are fit for the intended purpose for which they are designed. Our customers peace of mind is of paramount importance to us.

Warranty Periods

Showers	10 years
Drop In baths	10 years
Showers Screens and Doors	10 years
Black Coating on Framework	5 years
Freestanding Baths	5 years
Dezine Range Showers	5 years
Accessories	2 years

Warranty Exclusions

The product must be installed according to the instructions supplied.

The water supply temperature applied to the product must not exceed 55 degrees Celsius.

Commercial applications (where products are installed in a building where occupancy is via a commercial arrangement i.e. rental property, hotel, hostel etc.) are restricted to a 2 year warranty on all products.



PRODUCT MAINTENANCE

Bathroom products are used often and the following is our suggestion on how to clean and care for them.

Shower Wall

We use Durosan premium quality sanitaryware grade Acrylic. It is, by design, very robust and chemical resistant. A soft damp cloth with non-abrasive cleaners should be used. Use only non-abrasive cleaners that are recommended for acrylic products.

Shower Tray and Bath

We manufacture our Shower Trays and Baths using a Solid Acrylic Surface. Most other shower trays are manufactured using a veneer acrylic surface. The great advantage is that small scratches can be removed easily by using fine cutting compound. Again the same basic cleaning methods as the wall are recommended.

Shower Doors and Glass

All glass is compliant to AS/NZS 2208. We suggest that the glass surfaces are wiped down or squeegeed following use to remove excess water. For best results use a trusted glass cleaner.

Metal Framework

Should be cleaned using a soft damp cloth with non-abrasive cleaner. Note that on round showers, the bottom rollers are easy release for ease of cleaning. If chemical spray cleaners are used, avoid direct contact with the rollers and guides and ensure the shower is rinsed off to avoid residue build up.

Weather Seals and Drip Strips

Can be removed if required for cleaning, and can be replaced when they no longer look their best. Refer to the spare parts and accessories section of our website for more details.

Note - If the Glass has been treated follow specific cleaning instructions from the system provider.