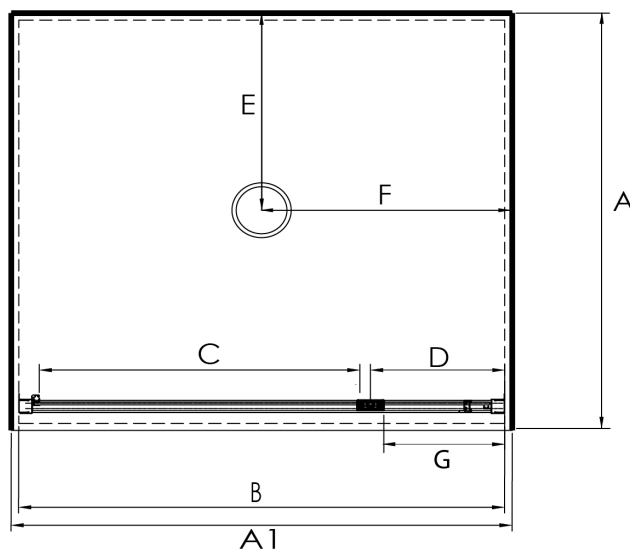


AQUERO UNEQUAL SIDED ALCOVE PIVOT DOOR SHOWERS



Pictured Above - 900x1200x900 Alcove
White Pivot Door Moulded Wall
SKU 3614518



DESCRIPTION

The Aquero Unequal Sided Alcove Pivot Door range of Showers can be purchased as a complete Shower Cubicle including Acrylic Tray, Wall Liner and Door Pack.

The Door Pack and Tray can also be purchased as individual items for a tiled floor and /or tiled wall installation.

Door is reversible - flip to fit.

FEATURES

- Low profile tray with 40mm upstand
- 1950mm high glass
- Total OVERALL height 2020mm
- Removeable drip strip and gutter
- Pivot door in a modern 1 piece design with 6mm Safety Glass
- Magnetic strip on closing edge of door
- Metal Trim on Base of Glass Return
- Quality alloy hardware

LEGEND

Dimension	Description	Shower Size					
		760x900 900mm Door	900 x 760 760mm Door	1200x800 1200mm Door	900x1200 900mm Door	1200x900 1200mm Door	1200x1000 1200mm Door
A	Tray External Dimension Depth	760mm	900mm	800mm	1200mm	900mm	1000mm
A1	Tray External Dimension Width	900mm	760mm	1200mm	900mm	1200mm	1200mm
B	Door Frame Outer Dimension	875mm	735mm	1175mm	875mm	1175mm	1175mm
C	Door Opening Dimension	640mm	550mm	640mm	640mm	640mm	640mm
D	Centre of Pivot Block to Liner	138mm	88mm	410mm	138mm	410mm	410mm
E	Waste position Depth	380mm	450mm	250mm	250mm	250mm	250mm
F	Waste Position Width	450mm	380mm	600mm	450mm	600mm	600mm
G	Small Glass Return Panel Width	N/A	N/A	393mm	N/A	393mm	393mm

ORDERING CODES

Product Description	SKU CODE					
	760x900x760 900mm Door	900x760x900 760mm Door	800x1200x800 1200mm Door	1200x900x1200 900mm Door	900x1200x900 1200mm Door	1000x1200x1000 1200mm Door
Alcove 3 sided Flat Wall White Pivot Door	3614493	3614497	S8X12X8AQAWHFW	S12X9X12AQAWHFW	3614517	S1X12X1AQAWHFW
Alcove 3 sided Flat Wall Silva Pivot Door	3614495	3614499	S8X12X8AQASIFW	S12X9X12AQASIFW	3614519	S1X12X1AQASIFW
Alcove 3 sided Flat Wall Black Pivot Door	S7X9X7AQABLFW	N/A	N/A	S12X9X12AQABLFW	N/A	N/A
Alcove 3 sided Moulded Back Wall White Pivot Door	3614494	N/A	S8X12X8AQAWHFW	N/A	3614518	N/A
Alcove 3 sided Moulded Back Wall Silva Pivot Door	3614496	N/A	S8X12X8AQASIMW	N/A	3614520	N/A
Alcove 3 sided Moulded Back Wall Black Pivot Door	S7X9X7AQABLMW	N/A	N/A	N/A	N/A	N/A
Flat Alcove Tray Only	TF57X9X7ALCCW	TF59X7X9ALCCW	TF58X12X8ALCRCW	TF512X9X12ALCRCW	TF59X12X9ALCRCW	TF51X12X1ALCRCW
Flat Alcove Wall Liner Only White 1950mm High	LB7X9X7FW3S195	LB9X7X9FW3S195	LB8X12X8FW3S195	LB12X9X12FW3S195	LB9X12X9FW3S195	LB1X12X1FW3S195
Moulded Back Wall / Wall Liner Only White 1950mm High	LB7X9X7MW3S195	LB9X7X9MW3S195	LB8X12X8MW3S195	N/A	LB9X12X9MW3S195	N/A
Pivot Door Only White (reversible opening)	D900WH195	D760WH195	D1200WH195	D900WH195	D1200WH195	D1200WH195
Pivot Door Only Silva (reversible opening)	D900SI195	D760SI195	D1200SI195	D900SI195	D1200SI195	D1200SI195
Pivot Door Only Black (reversible opening)	D900BL195	N/A	N/A	D900BL195	N/A	N/A

WARRANTY INFORMATION

All bathroomware products supplied by Nouera Shower Systems carry our Quality Assurance and Product Warranty. We use the highest quality materials available and manufacture these in accordance with New Zealand specifications and requirements to ensure that all products are fit for the intended purpose for which they are designed. Our customers peace of mind is of paramount importance to us.

Warranty Periods

Showers	10 years
Drop In baths	10 years
Showers Screens and Doors	10 years
Black Coating on Framework	5 years
Freestanding Baths	5 years
Dezine Range Showers	5 years
Accessories	2 years

Warranty Exclusions

The product must be installed according to the instructions supplied.

The water supply temperature applied to the product must not exceed 55 degrees Celsius.

Commercial applications (where products are installed in a building where occupancy is via a commercial arrangement i.e. rental property, hotel, hostel etc.) are restricted to a 2 year warranty on all products.



PRODUCT MAINTENANCE

Bathroom products are used often and the following is our suggestion on how to clean and care for them.

Shower Wall

We use Durosan premium quality sanitaryware grade Acrylic. It is, by design, very robust and chemical resistant. A soft damp cloth with non-abrasive cleaners should be used. Use only non-abrasive cleaners that are recommended for acrylic products.

Shower Tray and Bath

We manufacture our Shower Trays and Baths using a Solid Acrylic Surface. Most other shower trays are manufactured using a veneer acrylic surface. The great advantage is that small scratches can be removed easily by using fine cutting compound. Again the same basic cleaning methods as the wall are recommended.

Shower Doors and Glass

All glass is compliant to AS/NZS 2208. We suggest that the glass surfaces are wiped down or squeegeed following use to remove excess water. For best results use a trusted glass cleaner.

Metal Framework

Should be cleaned using a soft damp cloth with non-abrasive cleaner. Note that on round showers, the bottom rollers are easy release for ease of cleaning. If chemical spray cleaners are used, avoid direct contact with the rollers and guides and ensure the shower is rinsed off to avoid residue build up.

Weather Seals and Drip Strips

Can be removed if required for cleaning, and can be replaced when they no longer look their best. Refer to the spare parts and accessories section of our website for more details.

Note - If the Glass has been treated follow specific cleaning instructions from the system provider.

In accordance with our continuous product development programs, NOUERA Shower Systems sizes and specifications outlined in these specifications are subject to change without notice.

Information detailed in this technical sheet represents the actual product available at the time of printing this sheet. For the latest version of this technical sheet please visit www.symphonyshowers.co.nz or contact your nearest stockist to confirm any questions prior to purchase.