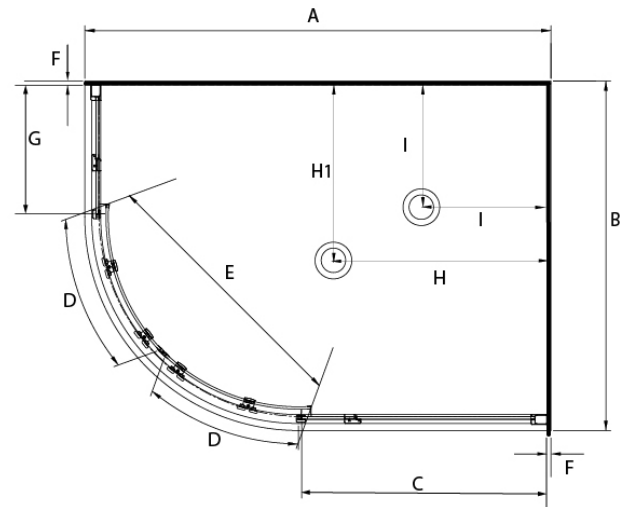


CURVATO ROUND UNEQUAL SIDED SHOWERS



Pictured Above - Curvato 1200 x 800 LH Silva Flat Wall
SKU CR12X8SIFWLH



DESCRIPTION

The Curvato Unequal Sided range of Showers can be brought as a complete shower cubicle including Acrylic Tray, Wall Liner and Door Pack.

The Door Pack and Tray can also be brought as individual items for installation on a tiled floor and/or tiled wall.

FEATURES

- Low profile tray with 40mm upstand
- 1950mm high glass
- Total OVERALL height 2020mm
- Quick release rollers for easy cleaning
- Magnetic strip on closing edges of doors
- 6mm Safety Glass
- Quality alloy handle, inner & outer

LEGEND

Dimension	Description	Shower Size			
		12 x 8 LH	12 x 8 RH	12 x 9 LH	12 x 9 RH
A	Tray External Length	1200mm	1200mm	1200mm	1200mm
B	Tray External Width	800mm	800mm	900mm	900mm
C	Glass Return Panel Width (incl alum extrusion)	590mm	590mm	630mm	630mm
C1	Return Panel overall (incl alum profile, wall channel +/- 10mm adjustment)	600mm	600mm	640mm	640mm
D	Door Panel Width	410mm	410mm	410mm	410mm
E	Door Opening Width	450mm	450mm	540mm	540mm
F	Gib and Liner thickness +/- 1.5mm	12.5mm	12.5mm	12.5mm	12.5mm
G	Small Glass Return Panel (incl alum extrusion)	240mm	240mm	330mm	330mm
G1	Return Panel overall (incl alum profile, wall channel +/- 10mm adjustment)	250mm	250mm	340mm	340mm
H	Centre Waste Dimension	N/A	N/A	550mm	550mm
H1	Centre Waste Dimension	N/A	N/A	450mm	450mm
I	Corner Waste Position	250mm	250mm	250mm	250mm

ORDERING CODES

Description	Shower Size			
	12 x 8 LH	12 x 8 RH	12 x 9 LH	12 x 9 RH
Complete Cubicle White Flat Wall	CR12X8WHFWLH	CR12X8WHFWRH	CR12X9WHFWLH	CR12X9WHFWRH
Complete Cubicle Silva Flat Wall	CR12X8SIFWLH	CR12X8SIFWRH	CR12X9SIFWLH	CR12X9SIFWRH
Complete Cubicle Black Flat Wall	CR12X8BLFWLH	CR12X8BLFWRH	CR12X9BLFWLH	CR12X9BLFWRH
Complete Cubicle White MOULDED Wall	CR12X8WHMWLH	CR12X8WHMWRH	CR12X9WHMWLH	CR12X9WHMWRH
Complete Cubicle Silva MOULDED Wall	CR12X8SIMWLH	CR12X8SIMWRH	CR12X9SIMWLH	CR12X9SIMWRH
Complete Cubicle Black MOULDED Wall	CR12X8BLMWLH	CR12X8BLMWRH	CR12X9BLMWLH	CR12X9BLMWRH
Corner waste tray option for complete cubicle	N/A - CNR as standard	N/A - CNR as standard	CNRWOPTION	CNRWOPTION
Tray Only Centre Waste White	N/A	N/A	TFR12X9LHCW	TFR12X9RHCW
Tray Only Corner Waste White	TFR12X8LHCNR	TFR12X8RHCNR	TFR12X9LHCNR	TFR12X9RHCNR
Liner Only Flat Wall 1950mm High White	LB12X8FW2S195	LB12X8FW2S196	LB12X9FW2S197	LB12X9FW2S198
Liner Only Moulded Wall 1950mm High White	LB12X8MW2S195	LB12X8MW2S196	LB12X9MW2S197	LB12X9MW2S198
Round Door Pack Complete 1950MM High White	DR12X8WH195	DR12X8WH195	DR12X9WH195	DR12X9WH195
Round Door Pack Complete 1950MM High Silva	DR12X8SI195	DR12X8SI195	DR12X9SI195	DR12X9SI195
Round Door Pack Complete 1950MM High Black	DR12X8BL195	DR12X8BL195	DR12X9BL195	DR12X9BL195

WARRANTY INFORMATION

All bathroomware products supplied by Nouera Shower Systems carry our Quality Assurance and Product Warranty. We use the highest quality materials available and manufacture these in accordance with New Zealand specifications and requirements to ensure that all products are fit for the intended purpose for which they are designed. Our customers peace of mind is of paramount importance to us.

Warranty Periods

Showers	10 years
Drop In baths	10 years
Shower Screens and Doors	10 years
Black Coating on Framework	5 years
Freestanding Baths	5 years
Dezine Range Showers	5 years
Accessories	2 years

Warranty Exclusions

The product must be installed according to the instructions supplied.

The water supply temperature applied to the product must not exceed 55 degrees Celsius.

Commercial applications (where products are installed in a building where occupancy is via a commercial arrangement i.e. rental property, hotel, hostel etc.) are restricted to a 2 year warranty on all products.



CLEANING AND MAINTENANCE

Bathroom products are used often and the following is our suggestion on how to clean and care for them.

Shower Wall

We use Durosan premium quality sanitaryware grade Acrylic. It is, by design, very robust and chemical resistant. A soft damp cloth with non-abrasive cleaners should be used. Use only non-abrasive cleaners that are recommended for acrylic products.

Shower Tray and Bath

We manufacture our Shower Trays and Baths using a Solid Acrylic Surface. Most other shower trays are manufactured using a veneer acrylic surface. The great advantage is that small scratches can be removed easily by using fine cutting compound. Again, the same basic cleaning methods as the wall are recommended.

Shower Doors and Glass

All glass is compliant to AS/NZS 2208. We suggest that the glass surfaces are wiped down or squeegeed following use to remove excess water. For best results use a trusted glass cleaner.

Metal Framework

Should be cleaned using a soft damp cloth with non-abrasive cleaner. Note that on round showers, the bottom rollers are easy release for ease of cleaning. If chemical spray cleaners are used, avoid direct contact with the rollers and guides and ensure the shower is rinsed off to avoid residue build up.

Weather seals and drip strips

Can be removed if required for cleaning, and can be replaced when they no longer look their best. Refer to the spare parts and accessories section of our website for more details.

Note - If the Glass has been treated follow specific cleaning instructions from the system provider.