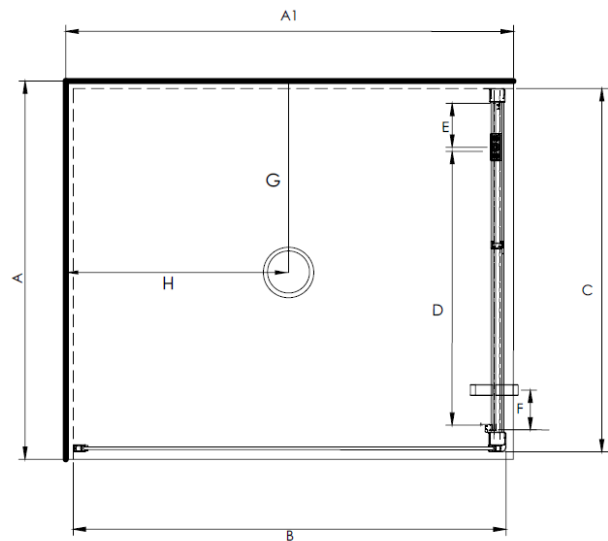


AQUERO 900 x 760 PIVOT DOOR SHOWERS



Pictured - Aquero 900x760mm (900mm Door)
Left-hand Tray Configuration White Moulded Wall
SKU 3614502



DESCRIPTION

The Aquero Range of Pivot Door Showers can be purchased as a complete Shower Cubicle including Acrylic Tray, Wall Liner and Door Pack.

The Door Pack and Tray can also be purchased as individual items for installation on a tiled floor and/or wall.

SEE TILE SHOWER LAYOUT FOR SETOUT DIMENSIONS

The door is reversible (flip to fit).

FEATURES

- Total OVERALL height 2020mm
- Available in Silva or White
- Low profile tray with 40mm upstand
- 1950mm high glass
- Pivot door in a modern 1 piece design with 6mm safety glass
- Extrusions allow for adjustment to wall and floor
- High quality hardware
- Door can be ordered on 760mm side as an optional extra (surcharge applies)

LEGEND

Dimension	Description	Shower Size	
		900 x 760 760 Door	900 x 760 900 Door
A	Tray External Width Dimension	760mm	760mm
A1	Tray External Length Dimension	900mm	900mm
B	Return Panel Dimension	870mm	730mm
C	Door Frame Dimension	730mm	870mm
D	Door Opening Dimension	550mm	640mm
E	Centre of Pivot Block to Inside of Frame	88mm	138mm
F	Centre of Handle to Edge of Door	80mm	80mm
G	Waste position	380mm	380mm
H	Waste position	450mm	450mm

ORDERING CODES

Product	SKU CODE			
	900X760mm LH 900mm Door	900X760mm RH 900mm Door	900X760mm LH 760mm Door	900 X 760mm RH 760mm Door
Complete Cubicle 2 Sided Flat Wall White Pivot Door	3614501	3614505	3614501*	3614505*
Complete Cubicle 2 Sided Flat Wall Silva Pivot Door	3614503	3614507	3614503*	3614507*
Complete Cubicle 2 Sided Flat Wall Black Pivot Door	S9X7AQSBFLWLH	S9X7AQSBFLWRH	N/A	N/A
Complete Cubicle 2 Sided Moulded (900 side) Back Wall White Pivot Door	3614502	3614506	3614502*	3614506*
Complete Cubicle 2 Sided Moulded (900 side) Back Wall Silva Pivot Door	3614504	3614508	3614504*	3614508*
Complete Cubicle 2 Sided Moulded (900 side) Back Wall Black Pivot Door	S9X7AQSBMLWLH	S9X7AQSBMLWRH	N/A	N/A
Flat Tray Only	TFS9X7LHCW	TFS9X7RHCW	TFS9X7LHCW	TFS9X7RHCW
Flat 2 Sided Wall Liner Only White 1950mm high	LB9X7FW2S195	LB9X7FW2S195	LB9X7FW2S195	LB9X7FW2S195
Moulded 2 Sided Back Wall / Wall Liner Only White 1950mm high	LB9X7MW2S195	LB9X7MW2S195	LB9X7MW2S195	LB9X7MW2S195
Pivot Door and Return Only White (reversible opening)	D9DX7RWH195	D9DX7RWH195	D7DX9RWH195	D7DX9RWH195
Pivot Door and Return Only Silva (reversible opening)	D9DX7RSI195	D9DX7RSI195	D7DX9RSI195	D7DX9RSI195
Pivot Door and Return Only Black (reversible opening)	D9DX7RBL195	D9DX7RBL195	N/A	N/A
* Please specify 760 Door / 900 Return on Order				

WARRANTY INFORMATION

All bathroomware products supplied by Nouera Shower Systems carry our Quality Assurance and Product Warranty. We use the highest quality materials available and manufacture these in accordance with New Zealand specifications and requirements to ensure that all products are fit for the intended purpose for which they are designed. Our customers peace of mind is of paramount importance to us.

Warranty Periods

Showers	10 years
Drop In baths	10 years
Shower Screens and Doors	10 years
Black Coating on Framework	5 years
Freestanding Baths	5 years
Dezine Range Showers	5 years
Accessories	2 years

Warranty Exclusions

The product must be installed according to the instructions supplied.

The water supply temperature applied to the product must not exceed 55 degrees Celsius.

Commercial applications (where products are installed in a building where occupancy is via a commercial arrangement i.e. rental property, hotel, hostel etc.) are restricted to a 2 year warranty on all products.



CLEANING AND MAINTENANCE

Bathroom products are used often and the following is our suggestion on how to clean and care for them.

Shower Wall

We use Durosan premium quality sanitaryware grade Acrylic. It is, by design, very robust and chemical resistant. A soft damp cloth with non-abrasive cleaners should be used. Use only non-abrasive cleaners that are recommended for acrylic products.

Shower Tray and Bath

We manufacture our Shower Trays and Baths using a Solid Acrylic Surface. Most other shower trays are manufactured using a veneer acrylic surface. The great advantage is that small scratches can be removed easily by using fine cutting compound. Again, the same basic cleaning methods as the wall are recommended.

Shower Doors and Glass

All glass is compliant to AS/NZS 2208. We suggest that the glass surfaces are wiped down or squeegeed following use to remove excess water. For best results use a trusted glass cleaner.

Metal Framework

Should be cleaned using a soft damp cloth with non-abrasive cleaner. Note that on round showers, the bottom rollers are easy release for ease of cleaning. If chemical spray cleaners are used, avoid direct contact with the rollers and guides and ensure the shower is rinsed off to avoid residue build up.

Weather Seals and Drip Strips

Can be removed if required for cleaning, and can be replaced when they no longer look their best. Refer to the spare parts and accessories section of our website for more details.

Note - If the Glass has been treated follow specific cleaning instructions from the system provider.