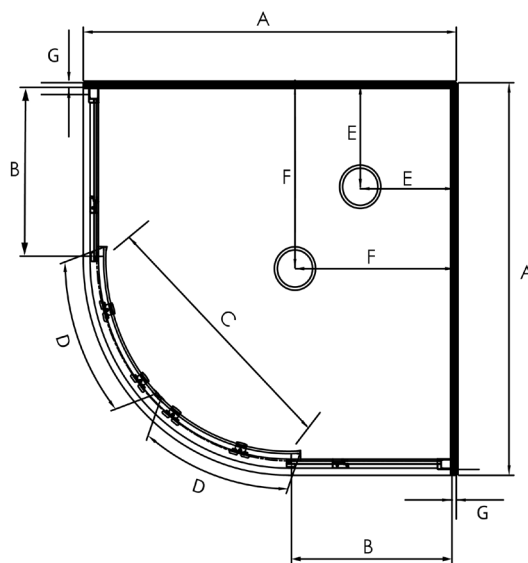


CURVATO ROUND CORNER SHOWERS



Pictured above - Curvato 900 x 900mm
Silva Moulded Wall
SKU CR900SIMW



DESCRIPTION

The Curvato Round Sliding Door range of Showers can be brought as a complete shower cubicle including Acrylic Tray, Wall Liner and Door Pack.

The Door Pack and Tray can also be brought as individual items for installation on a tiled floor and/or tiled wall.

FEATURES

- Low profile tray with 40mm upstand
- 1950mm high glass
- Total OVERALL height 2020mm
- Quick release rollers for easy cleaning
- Magnetic strip on closing edges of doors
- 6mm Safety Glass
- Quality alloy handle, inner & outer
- Available in White, Silva or Black

LEGEND

Dimension	Description	Shower Size					
		820mm	900mm	928mm	955mm	1000mm	1055mm
A	Tray External Dimension	820mm	900mm	928mm	955mm	1000mm	1055mm
B	Glass Return Panel Width (incl alum extrusion)	355mm	330mm	355mm	385mm	430mm	485mm
B1	Return Panel (incl wall channel +/- 10mm adjustment)	365mm	340mm	365mm	395mm	440mm	495mm
C	Door Opening Dimension	450mm	540mm	540mm	540mm	540mm	540mm
D	Door Panel Dimension	310mm	410mm	410mm	410mm	410mm	410mm
E	Waste Position (Corner waste)	250mm	250mm	250mm	250mm	250mm	250mm
G	Waste Position (Centre waste)	360mm	450mm	450mm	450mm	450mm	450mm
I	Gib and Liner thickness +/- 1.5mm	12.5mm	12.5mm	12.5mm	12.5mm	12.5mm	12.5mm

ORDERING CODES

Description	Shower Size					
	820mm	900mm	928mm	955mm	1000mm	1055mm
Complete Cubicle White Flat Wall	CR820WHFW	CR900WHFW	CR928WHFW	CR955WHFW	CR1000WHFW	CR1055WHFW
Complete Cubicle Silva Flat Wall	CR820SIFW	CR900SIFW	CR928SIFW	CR955SIFW	CR1000SIFW	CR1055SIFW
Complete Cubicle Black Flat Wall	CR820BLFW	CR900BLFW	N/A	N/A	CR1000BLFW	N/A
Complete Cubicle White Moulded Wall	CR820WHMW	CR900WHMW	CR928WHMW	CR955WHMW	CR1000WHMW	CR1055WHMW
Complete Cubicle Silva Moulded Wall	CR820SIMW	CR900SIMW	CR928SIMW	CR955SIMW	CR1000SIMW	CR1055SIMW
Complete Cubicle Black Moulded Wall	CR820BLMW	CR900BLMW	N/A	N/A	CR1000BLMW	N/A
Corner waste tray option for complete cubicle	CNRWOPTION	CNRWOPTION	CNRWOPTION	CNRWOPTION	CNRWOPTION	CNRWOPTION
Tray Only Centre Waste White	TFR820CW	TFR900CW	TFR928CW	TFR955CW	TFR1000CW	TFR1055CW
Tray Only Corner Waste White	TFR820CNR	TFR900CNR	TFR928CNR	TFR955CNR	TFR1000CNR	TFR1055CNR
Liner Only Flat Wall 1950mm High White	LB820FW2S195	LB9X9FW2S195	LB928FW2S195	LB955FW2S195	LB1X1FW2S195	LB1055FW2S195
Liner Only Moulded Wall 1950mm High White	LB820MW2S195	LB9X9MW2S195	LB928MW2S195	LB955MW2S195	LB1X1MW2S195	LB1055MW2S195
Round Door Pack Complete 1950mm High White	DR820WH195	DR900WH195	DR928WH195	DR955WH195	DR1000WH195	DR1055WH195
Round Door Pack Complete 1950mm High Silva	DR820SI195	DR900SI195	DR928SI195	DR955SI195	DR1000SI195	DR1055SI195
Round Door Pack Complete 1950mm High Black	DR820BL195	DR900BL195	N/A	N/A	DR1000BL195	N/A

WARRANTY INFORMATION

All bathroomware products supplied by Fibre Systems carry our Quality Assurance and Product Warranty. We use the highest quality materials available and manufacture these in accordance with New Zealand specifications and requirements to ensure that all products are fit for the intended purpose for which they are designed. Our customers peace of mind is of paramount importance to us.

Warranty Periods

Showers	10 years
Drop In baths	10 years
Shower Screens and Doors	10 years
Black Coating on Framework	5 years
Freestanding Baths	5 years
Dezine Range Showers	5 years
Accessories	2 years

Warranty Exclusions

The product must be installed according to the instructions supplied.

The water supply temperature applied to the product must not exceed 55 degrees Celsius.

Commercial applications (where products are installed in a building where occupancy is via a commercial arrangement i.e. rental property, hotel, hostel etc.) are restricted to a 2 year warranty on all products.



CLEANING AND MAINTENANCE

Bathroom products are used often and the following is our suggestion on how to clean and care for them.

Shower Wall

We use Durosan premium quality sanitaryware grade Acrylic. It is, by design, very robust and chemical resistant. A soft damp cloth with non-abrasive cleaners should be used. Use only non-abrasive cleaners that are recommended for acrylic products.

Shower Tray and Bath

We manufacture our Shower Trays and Baths using a Solid Acrylic Surface. Most other shower trays are manufactured using a veneer acrylic surface. The great advantage is that small scratches can be removed easily by using fine cutting compound. Again the same basic cleaning methods as the wall are recommended.

Shower Doors and Glass

All glass is compliant to AS/NZS 2208. We suggest that the glass surfaces are wiped down or squeegeed following use to remove excess water. For best results use a trusted glass cleaner.

Metal Framework

Should be cleaned using a soft damp cloth with non-abrasive cleaner. Note that on round showers, the bottom rollers are easy release for ease of cleaning. If chemical spray cleaners are used, avoid direct contact with the rollers and guides and ensure the shower is rinsed off to avoid residue build up.

Weather Seals and Drip Strips

Can be removed if required for cleaning, and can be replaced when they no longer look their best. Refer to the spare parts and accessories section of our website for more details.

Note - If the Glass has been treated follow specific cleaning instructions from the system provider.