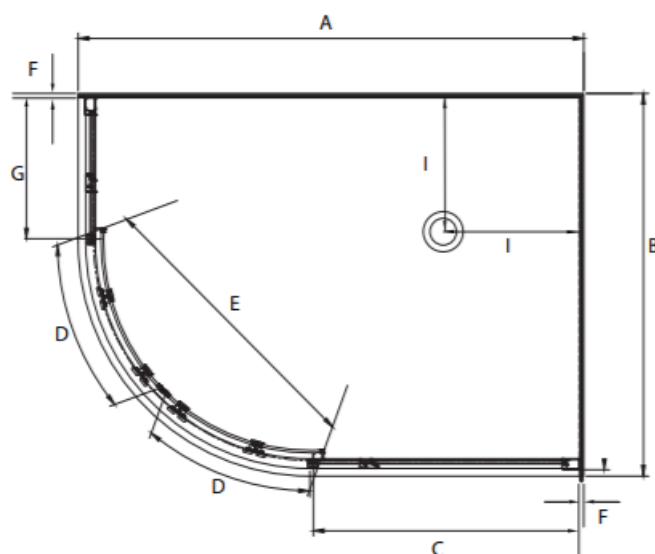


# DEZINE ROUND UNEQUAL SIDED SHOWERS



Pictured - DeZine 1200 x 800mm LH Round Corner

SKU S12X8DEZSILH



## DESCRIPTION

The DeZine range of Unequal Sided Round Showers can be purchased as a complete shower cubicle including Acrylic Tray, Wall Liner and Door Pack.

The Door Pack and Tray can also be brought as an individual item for installation on a tiled floor and wall.

## FEATURES

- Low profile tray with 40mm upstand
- Total OVERALL height 1970mm
- Quick release rollers for easy cleaning
- Magnetic strip on closing edges of doors
- Safety Glass compliant to AS/NZ2208 Safety Standard
- Silver frame/Polished anodised aluminium

## LEGEND

Dimension	Description	Shower Size	
		1200 x 800mm RH	1200 x 800mm LH
A	Tray External Length	1200mm	1200mm
B	Tray External Width	800mm	800mm
C	Large Glass Return Panel	640mm	640mm
D	Door Panel Width	410mm	410mm
E	Door Opening Width	450mm	450mm
F	Gib and Liner Thickness +/- 1.5mm	12.5mm	12.5mm
G	Small Glass Return Panel	200mm	200mm
I	Corner Waste Position	250mm	250mm

## ORDERING CODES

Product Description	Shower Size
	1200 x 800mm
Complete Cubicle Silva Flat Wall RH	S12X8DEZSIRH
Complete Cubicle Silva Flat Wall LH	S12X8DEZSILH
Tray Only Corner Waste White RH	TFR12X8RHCNR
Tray Only Corner Waste White LH	TFR12X8LHCNR
Liner Only Flat Wall 1900mm High White	LBEL12X8FW2S19
Round Door Pack Complete 1900mm High Silva RH/LH	DER12X8S119

## WARRANTY INFORMATION

All bathroomware products supplied by Fibre Systems carry our Quality Assurance and Product Warranty. We use the highest quality materials available and manufacture these in accordance with New Zealand specifications and requirements to ensure that all products are fit for the intended purpose for which they are designed. Our customers peace of mind is of paramount importance to us.

### Warranty Periods

Dezine Range Showers 5 years

### Warranty Exclusions

The product must be installed according to the instructions supplied.

The water supply temperature applied to the product must not exceed 55 degrees Celsius.

Commercial applications (where products are installed in a building where occupancy is via a commercial arrangement i.e. rental property, hotel, hostel etc.) are restricted to a 2 year warranty on all products.



## PRODUCT MAINTENANCE

Bathroom products are used often and the following is our suggestion on how to clean and care for them.

### Shower Wall

We use Durosan premium quality sanitaryware grade Acrylic. It is, by design, very robust and chemical resistant. A soft damp cloth with non-abrasive cleaners should be used. Use only non-abrasive cleaners that are recommended for acrylic products.

### Shower Tray and Bath

We manufacture our Shower Trays and Baths using a Solid Acrylic Surface. Most other shower trays are manufactured using a veneer acrylic surface. The great advantage is that small scratches can be removed easily by using fine cutting compound. Again the same basic cleaning methods as the wall are recommended.

### Shower Doors and Glass

All glass is compliant to AS/NZS 2208. We suggest that the glass surfaces are wiped down or squeegeed following use to remove excess water. For best results use a trusted glass cleaner.

### Metal Framework

Should be cleaned using a soft damp cloth with non-abrasive cleaner. Note that on round showers, the bottom rollers are easy release for ease of cleaning. If chemical spray cleaners are used, avoid direct contact with the rollers and guides and ensure the shower is rinsed off to avoid residue build up.

### Weather Seals and Drip Strips

Can be removed if required for cleaning, and can be replaced when they no longer look their best. Refer to the spare parts and accessories section of our website for more details.

**Note - If the Glass has been treated follow specific cleaning instructions from the system provider.**