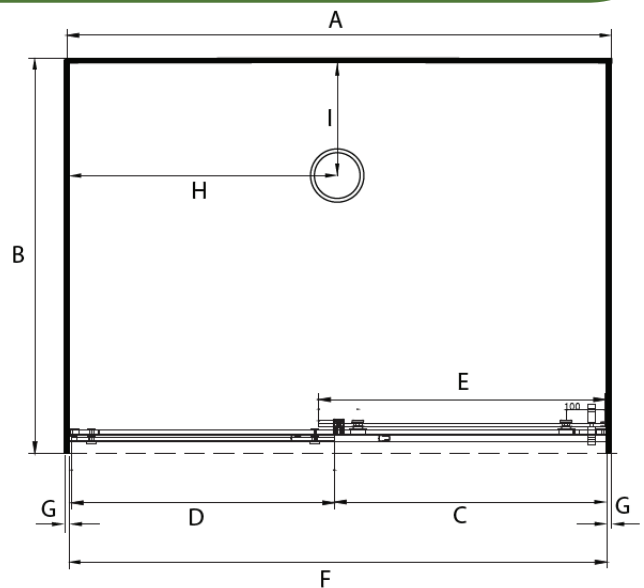


SKU SP1X12SIFWLH



The door is not reversible - and closes to the glass

- Total OVERALL height 2060mm
- 2000mm high glass
- 8mm frameless Safety Glass
- Low profile tray with 40mm upstand
- Door closes to glass return
- Minimalistic extrusion allows adjustment to wall and floor
- No silicone joins required for glass
- High quality stainless / alloy fittings
- Available in Silva and Black

[illegible]

ORDERING CODES

Product Description	SKU CODE			
	800 X 1200 X 800	900 X 1200 X 900	1000 X 1200 X 1000	1000 X 1400 X 1000
Complete Cubicle Flat Wall Silva Left Hand Opening Door	SP8X12X8SIFWLH	SP9X12X9SIFWLH	SP1X12X1SIFWLH	SP1X14X1SIFWLH
Complete Cubicle Flat Wall Silva Right Hand Opening Door	SP8X12X8SIFWRH	SP9X12X9SIFWRH	SP1X12X1SIFWRH	SP1X14X1SIFWRH
Complete Cubicle Flat Wall Black Left Hand Opening Door	SP8X12X8BLFWLH	SP9X12X9BLFWLH	SP1X12X1BLFWLH	SP1X14X1BLFWLH
Complete Cubicle Flat Wall Black Right Hand Opening Door	SP8X12X8BLFWRH	SP9X12X9BLFWRH	SP1X12X1BLFWRH	SP1X14X1BLFWRH
Complete Cubicle Flat Wall White Left Hand Opening Door	SP8X12X8WHFWLH	SP9X12X9WHFWLH	SP1X12X1WHFWLH	SP1X14X1WHFWLH
Complete Cubicle Flat Wall White Right Hand Opening Door	SP8X12X8WHFWRH	SP9X12X9WHFWRH	SP1X12X1WHFWRH	SP1X14X1WHFWRH
Tray Only Centre Rear Waste	TFS8X12X8ALCROW	TFS9X12X9ALCROW	TFS1X12X1ALCROW	TFS1X14X1ALCROW
Liner Only Flat Wall 2000mm High 3 sided White	LB8X12X8FW3S2M	LB9X12X9FW3S2M	LB1X12X1FW3S2M	LB1X14X1ALCROW
Door Pack 2000mm High Silva Left Hand Opening Door	D1200SILH2M	D1200SILH2M	D1200SILH2M	D1400SILH2M
Door Pack 2000mm High Silva Right Hand Opening Door	D1200SIRH2M	D1200SIRH2M	D1200SIRH2M	D1400SIRH2M
Door Pack 2000mm High Black Left Hand Opening Door	D1200BLH2M	D1200BLH2M	D1200BLH2M	D1400BLH2M
Door Pack 2000mm High Black Right Hand Opening Door	D1200BLRH2M	D1200BLRH2M	D1200BLRH2M	D1400BLRH2M
Door Pack 2000mm High White Left Hand Opening Door	D1200WHLH2M	D1200WHLH2M	D1200WHLH2M	D1400WHLH2M
Door Pack 2000mm High White Right Hand Opening Door	D1200WHRH2M	D1200WHRH2M	D1200WHRH2M	D1400WHRH2M

	900 X 1500 X 900	900 X 1600 X 900	900 X 1700 X 900	900 X 1800 X 900
Complete Cubicle Flat Wall Silva Left Hand Opening Door	SP9X15X9SIFWLH	SP9X16X9SIFWLH	SP9X17X9SIFWLH	SP9X18X9SIFWLH
Complete Cubicle Flat Wall Silva Right Hand Opening Door	SP9X15X9SIFWRH	SP9X16X9SIFWRH	SP9X17X9SIFWRH	SP9X18X9SIFWRH
Complete Cubicle Flat Wall Black Left Hand Opening Door	SP9X15X9BLFWLH	SP9X16X9BLFWLH	SP9X17X9BLFWLH	SP9X18X9BLFWLH
Complete Cubicle Flat Wall Black Right Hand Opening Door	SP9X15X9BLFWRH	SP9X16X9BLFWRH	SP9X17X9BLFWRH	SP9X18X9BLFWRH
Complete Cubicle Flat Wall White Left Hand Opening Door	SP9X15X9WHFWLH	SP9X16X9WHFWLH	SP9X17X9WHFWLH	SP9X18X9WHFWLH
Complete Cubicle Flat Wall White Right Hand Opening Door	SP9X15X9WHFWRH	SP9X16X9WHFWRH	SP9X17X9WHFWRH	SP9X18X9WHFWRH
Tray Only Centre Rear Waste	TFS9X15X9ALCROW	TFS9X16X9ALCROW	TFS9X17X9ALCROW	TFS9X18X9ALCROW
Liner Only Flat Wall 2000mm High 3 sided White	LB9X15X9FW3S2M	LB9X16X9FW3S2M	LB9X17X9FW3S2M	LB9X18X9FW3S2M
Door Pack 2000mm High Silva Left Hand Opening Door	D1500SILH2M	D1600SILH2M	D1700SILH2M	D1800SILH2M
Door Pack 2000mm High Silva Right Hand Opening Door	D1500SIRH2M	D1600SIRH2M	D1700SIRH2M	D1800SIRH2M
Door Pack 2000mm High Black Left Hand Opening Door	D1500BLH2M	D1600BLH2M	D1700BLH2M	D1800BLH2M
Door Pack 2000mm High Black Right Hand Opening Door	D1500BLRH2M	D1600BLRH2M	D1700BLRH2M	D1800BLRH2M
Door Pack 2000mm High White Left Hand Opening Door	D1500WHLH2M	D1600WHLH2M	D1700WHLH2M	D1800WHLH2M
Door Pack 2000mm High White Right Hand Opening Door	D1500WHRH2M	D1600WHRH2M	D1700WHRH2M	D1800WHRH2M

WARRANTY INFORMATION

All bathroomware products supplied by Fibre Systems carry our Quality Assurance and Product Warranty. We use the highest quality materials available and manufacture these in accordance with New Zealand specifications and requirements to ensure that all products are fit for the intended purpose for which they are designed. Our customers peace of mind is of paramount importance to us.

Warranty Periods

Showers	10 years
Drop In baths	10 years
Shower Screens and Doors	10 years
Black Coating on Framework	5 years
Freestanding Baths	5 years
Dezine Range Showers	5 years
Accessories	2 years

Warranty Exclusions

The product must be installed according to the instructions supplied.
The water supply temperature applied to the product must not exceed 55 degrees Celsius.
Commercial applications (where products are installed in a building where occupancy is via a commercial arrangement i.e. rental property, hotel, hostel etc.) are restricted to a 2 year warranty on all products.



PRODUCT MAINTENANCE

Bathroom products are used often and the following is our suggestion on how to clean and care for them.

Shower Wall

We use Durosan premium quality sanitaryware grade Acrylic. It is, by design, very robust and chemical resistant. A soft damp cloth with non-abrasive cleaners should be used. Use only non-abrasive cleaners that are recommended for acrylic products.

Shower Tray and Bath

We manufacture our Shower Trays and Baths using a Solid Acrylic Surface. Most other shower trays are manufactured using a veneer acrylic surface. The great advantage is that small scratches can be removed easily by using fine cutting compound. Again, the same basic cleaning methods as the wall are recommended.

Shower Doors and Glass

All glass is compliant to AS/NZS 2208. We suggest that the glass surfaces are wiped down or squeegeed following use to remove excess water. For best results use a trusted glass cleaner.

Metal Framework

Should be cleaned using a soft damp cloth with non-abrasive cleaner. Note that on round showers, the bottom rollers are easy release for ease of cleaning. If chemical spray cleaners are used, avoid direct contact with the rollers and guides and ensure the shower is rinsed off to avoid residue build up.

Weather Seals and Drip Strips

Can be removed if required for cleaning, and can be replaced when they no longer look their best. Refer to the spare parts and accessories section of our website for more details.

Note - If the Glass has been treated follow specific cleaning instructions from the system provider.