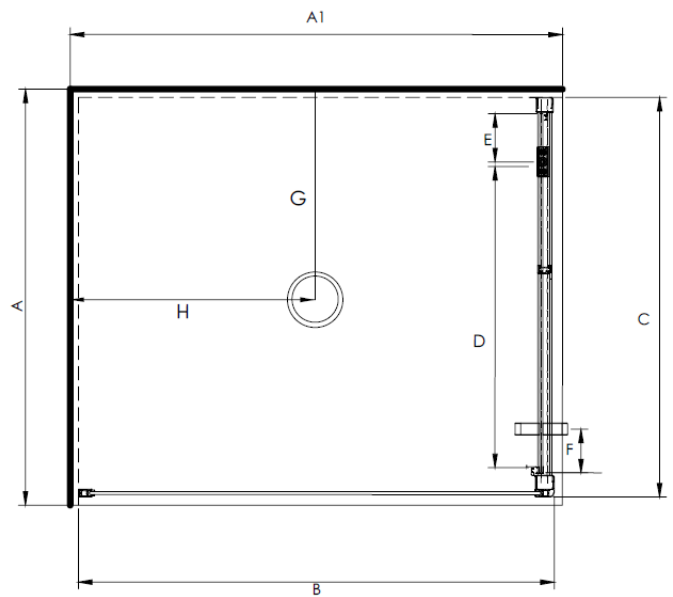


# AQUERO 900 x 760 PIVOT DOOR SHOWERS



Pictured - Aquero 900x760mm (900mm Door)  
Left-hand Tray Configuration White Moulded Wall  
**SKU 3614502**



## DESCRIPTION

The Aquero Range of Pivot Door Showers can be purchased as a complete Shower Cubicle including Acrylic Tray, Wall Liner and Door Pack.

The Door Pack and Tray can also be purchased as individual items for installation on a tiled floor and/or wall.

SEE TILE SHOWER LAYOUT FOR SETOUT DIMENSIONS

The door is reversible (flip to fit).

## FEATURES

- Total OVERALL height 2020mm
- Available in Silva or White
- Low profile tray with 40mm upstand
- 1950mm high glass
- Pivot door in a modern 1 piece design with 6mm safety glass
- Extrusions allow for adjustment to wall and floor
- High quality hardware
- Door can be ordered on 760mm side as an optional extra (surcharge applies)

## LEGEND

Dimension	Description	Shower Size	
		900 x 760 760 Door	900 x 760 900 Door
A	Tray External Width Dimension	760mm	760mm
A1	Tray External Length Dimension	900mm	900mm
B	Return Panel Dimension	870mm	730mm
C	Door Frame Dimension	730mm	870mm
D	Door Opening Dimension	550mm	640mm
E	Centre of Pivot Block to Inside of Frame	88mm	138mm
F	Centre of Handle to Edge of Door	80mm	80mm
G	Waste position	380mm	380mm
H	Waste position	450mm	450mm

## ORDERING CODES

Product	Ordering Codes			
	900X760mm LH 900mm Door	900X760mm RH 900mm Door	900X760mm LH 760mm Door	900 X 760mm RH 760mm Door
Complete Cubicle 2 Sided Flat Wall White Pivot Door	S9X7AQSWHFWLH	S9X7AQSWHFWRH	S9X7AQSWHFWLH* + SC760	S9X7AQSWHFWRH* + SC760
Complete Cubicle 2 Sided Flat Wall Silva Pivot Door	S9X7AQSSIFWLH	S9X7AQSSIFWRH	S9X7AQSSIFWLH* + SC760	S9X7AQSSIFWRH* + SC760
Complete Cubicle 2 Sided Flat Wall Black Pivot Door	S9X7AQSBLFWLH	S9X7AQSBLFWRH	N/A	N/A
Complete Cubicle 2 Sided Moulded (900 side) Back Wall White Pivot Door	S9X7AQSWHMWLH	S9X7AQSWHMWRH	S9X7AQSWHMWLH* + SC760	S9X7AQSWHMWRH* + SC760
Complete Cubicle 2 Sided Moulded (900 side) Back Wall Silva Pivot Door	S9X7AQSSIMWLH	S9X7AQSSIMWRH	S9X7AQSSIMWLH* + SC760	S9X7AQSSIMWRH* + SC760
Complete Cubicle 2 Sided Moulded (900 side) Back Wall Black Pivot Door	S9X7AQSBLMWLH	S9X7AQSBLMWRH	N/A	N/A
Flat Tray Only	TFS9X7LHCW	TFS9X7RHCW	TFS9X7LHCW	TFS9X7RHCW
Flat 2 Sided Wall Liner Only White 1950mm high	LB9X7FW2S195	LB9X7FW2S195	LB9X7FW2S195	LB9X7FW2S195
Moulded 2 Sided Back Wall / Wall Liner Only White 1950mm high	LB9X7MW2S195V2	LB9X7MW2S195V2	LB9X7MW2S195V2	LB9X7MW2S195V2
Pivot Door and Return Only White (reversible opening)	D9DX7RWH195SYMP	D9DX7RWH195SYMP	D7DX9RWH195SYMP	D7DX9RWH195SYMP
Pivot Door and Return Only Silva (reversible opening)	D9DX7RSI195SYMP	D9DX7RSI195SYMP	D7DX9RSI195SYMP	D7DX9RSI195SYMP
Pivot Door and Return Only Black (reversible opening)	D9DX7RBL195SYMP	D9DX7RBL195SYMP	N/A	N/A
			* Please specify 760 Door / 900 Return on Order	

## WARRANTY INFORMATION

All bathroomware products supplied by Fibre Systems carry our Quality Assurance and Product Warranty. We use the highest quality materials available and manufacture these in accordance with New Zealand specifications and requirements to ensure that all products are fit for the intended purpose for which they are designed. Our customer's peace of mind is of paramount importance to us.

### Warranty Periods

Baths	10 years
Showers	10 years
Shower Screens and Doors	10 years
Silva and White Coatings	10 years
E-Line + Squareline + Dezine Showers	5 years
Black Coatings	5 years
Aquaknight Easy Clean Wastes	7 years
Accessories	2 years

### Warranty Exclusions

The product must be installed according to the instructions supplied.

The water supply temperature applied to the product must not exceed 55 degrees Celsius.

All cleaning and cleaning products must be in accordance with our cleaning instructions and guidance.

Commercial Applications (where products are installed in a building where occupancy is via a commercial arrangement i.e. a rental property, hotel, hostel etc) are restricted to a 2 year warranty on all products.



## CLEANING AND MAINTENANCE

Please refer to our cleaning instructions document for guidance - available on our website.