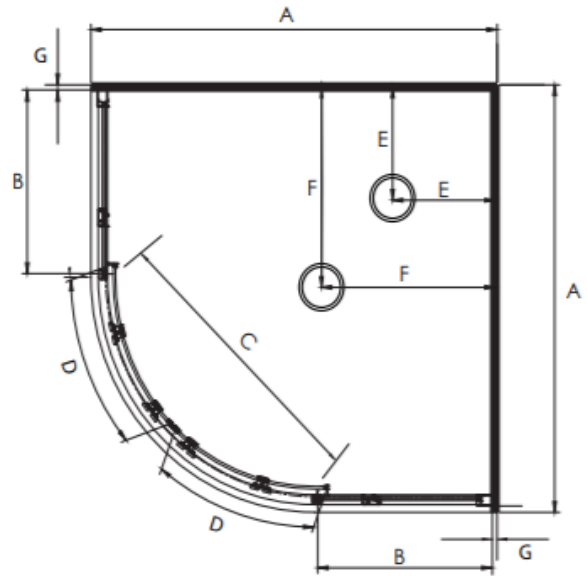


# DEZINE ROUND EQUAL SIDED SHOWERS



Pictured - Dezine 900 x 900mm Round Corner

**SKU SR900DEZSIFW**



## DESCRIPTION

The Dezine range of Equal Sided Round Showers can be purchased as a complete shower cubicle including Acrylic Tray, Wall Liner and Door Pack.

The Door Pack and Tray can also be brought as an individual item for installation on a tiled floor and wall.

## FEATURES

- Low profile tray with 40mm upstand
- Total OVERALL height 1970mm
- Quick release rollers for easy cleaning
- Magnetic strip on closing edges of doors
- Safety Glass compliant to AS/NZ2208 Safety Standard
- Silver frame/Polished anodised aluminium

## LEGEND

Dimension	Description	Shower Size	
		900mm	1000mm
A	Tray External Dimension	900mm	1000mm
B	Return Panel Dimension	335mm	430mm
C	Door Opening Dimension	540mm	540mm
D	Door Panel Dimension	410mm	410mm
E	Waste Position (Corner Waste)	250mm	250mm
F	Waste Position (Centre Waste)	450mm	450mm
G	Gib and Liner Thickness +/- 1.5mm	13mm	13mm

## ORDERING CODES

Product Description	Shower Size	
	900mm	1000mm
Complete Cubicle Silva Flat Wall	SR900DEZSIFW	SR1000DEZSIFW
Corner Waste Tray Option for Complete Cubicle	SPECIFY ON ORDER	
Tray Only Centre Waste White	TFR900CW	TFR1000CW
Tray Only Corner Waste White	TFR900CNR	TFR1000CNR
Liner Only Flat Wall 1900mm High White	LBEL9X9FW2S19	LBEL1X1FW2S19
Round Door Pack Complete 1900mm High Silva	DER900S19	DER1000S19

## WARRANTY INFORMATION

All bathroomware products supplied by Fibre Systems carry our Quality Assurance and Product Warranty. We use the highest quality materials available and manufacture these in accordance with New Zealand specifications and requirements to ensure that all products are fit for the intended purpose for which they are designed. Our customer's peace of mind is of paramount importance to us.

### Warranty Periods

Dezine Showers	5 years
Aquaknight Easy Clean Wastes	7 years
Accessories	2 years

### Warranty Exclusions

The product must be installed according to the instructions supplied.

The water supply temperature applied to the product must not exceed 55 degrees Celsius.

All cleaning and cleaning products must be in accordance with our cleaning instructions and guidance.

Commercial Applications (where products are installed in a building where occupancy is via a commercial arrangement i.e. a rental property, hotel, hostel etc) are restricted to a 2 year warranty on all products.



## CLEANING AND MAINTENANCE

Please refer to our cleaning instructions document for guidance - available on our website.