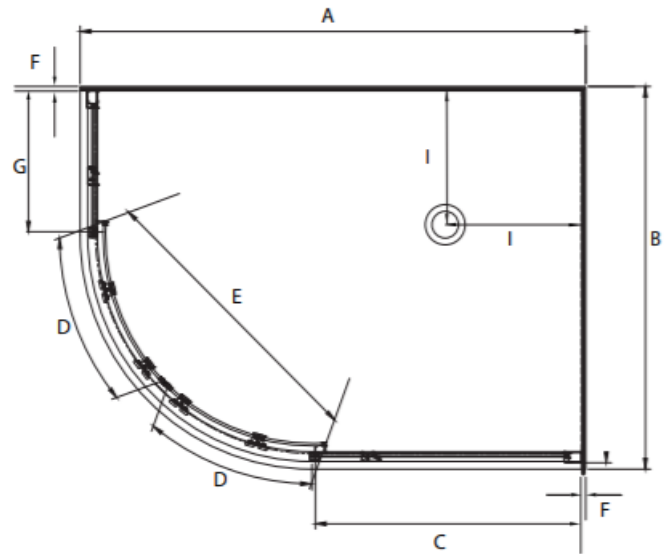


DEZINE ROUND UNEQUAL SIDED SHOWERS



Pictured - Dezine 1200 x 800mm LH Round Corner

SKU S12X8DEZSILH



DESCRIPTION

The Dezine range of Unequal Sided Round Showers can be purchased as a complete shower cubicle including Acrylic Tray, Wall Liner and Door Pack.

The Door Pack and Tray can also be brought as an individual item for installation on a tiled floor and wall.

FEATURES

- Low profile tray with 40mm upstand
- Total OVERALL height 1970mm
- Quick release rollers for easy cleaning
- Magnetic strip on closing edges of doors
- Safety Glass compliant to AS/NZ2208 Safety Standard
- Silver frame/Polished anodised aluminium

LEGEND

Dimension	Description	Shower Size	
		1200 x 800mm RH	1200 x 800mm LH
A	Tray External Length	1200mm	1200mm
B	Tray External Width	800mm	800mm
C	Large Glass Return Panel	640mm	640mm
D	Door Panel Width	410mm	410mm
E	Door Opening Width	450mm	450mm
F	Gib and Liner Thickness +/- 1.5mm	12.5mm	12.5mm
G	Small Glass Return Panel	200mm	200mm
I	Corner Waste Position	250mm	250mm

ORDERING CODES

Product Description	Shower Size
	1200 x 800mm
Complete Cubicle Silva Flat Wall RH	S12X8DEZSIRH
Complete Cubicle Silva Flat Wall LH	S12X8DEZSILH
Tray Only Corner Waste White RH	TFR12X8RHCNR
Tray Only Corner Waste White LH	TFR12X8LHCNR
Liner Only Flat Wall 1900mm High White	LBEL12X8FW2S19
Round Door Pack Complete 1900mm High Silva RH/LH	DER12X8SI19

WARRANTY INFORMATION

All bathroomware products supplied by Fibre Systems carry our Quality Assurance and Product Warranty. We use the highest quality materials available and manufacture these in accordance with New Zealand specifications and requirements to ensure that all products are fit for the intended purpose for which they are designed. Our customer's peace of mind is of paramount importance to us.

Warranty Periods

Dezine Showers	5 years
Aquaknight Easy Clean Wastes	7 years
Accessories	2 years

Warranty Exclusions

The product must be installed according to the instructions supplied.

The water supply temperature applied to the product must not exceed 55 degrees Celsius.

All cleaning and cleaning products must be in accordance with our cleaning instructions and guidance.

Commercial Applications (where products are installed in a building where occupancy is via a commercial arrangement i.e. a rental property, hotel, hostel etc) are restricted to a 2 year warranty on all products.



CLEANING AND MAINTENANCE

Please refer to our cleaning instructions document for guidance - available on our website.

In accordance with our continuous product development programs, Fibre Systems sizes and specifications outlined in these specifications are subject to change without notice.

Information detailed in this technical sheet represents the actual product available at the time of printing this sheet. For the latest version of this technical sheet please visit www.symphonyshowers.co.nz or contact your nearest stockist to confirm any questions prior to purchase.