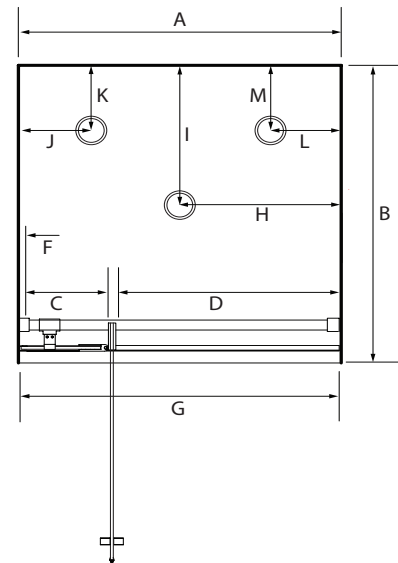


# Premier Adjustable Frameless Pivot Alcove Showers



Pictured - 900 x 900 x 900 Alcove Black



## DESCRIPTION

The Premier Adjustable Frameless Pivot Alcove range of showers can be purchased as a complete shower cubicle including Acrylic Tray, Wall Liner and Door Pack.

The Door Pack and Tray can also be purchased as individual items for installation on a tiled floor and/or wall.

SEE TILE SHOWER LAYOUT FOR SETOUT DIMENSIONS

## FEATURES

- Frameless design with adjustable pivot hinges for easy door installation and adjustment
- Total OVERALL height 2060mm
- 2000mm high glass
- Silva or Black extrusions and hardware
- Low profile tray with 40mm upstand
- 8mm Safety Glass
- Door closes to glass return
- Minimalistic extrusion allows adjustment to wall and floor
- No silicone joints required for glass

## LEGEND

DIMENSION	DESCRIPTION	FRAMELESS ALCOVE RANGE	
		900x900x900	1000x1000x1000
A	Tray External Width	900mm	1000mm
B	Tray External Depth	900mm	1000mm
C	Hinge Panel Width (excl receiver)	197mm	297mm
D	Door Opening Width	620mm	620mm
E	Wall Receiver Width	25mm	25mm
F	Overall Opening (liner to Liner)	875mm	975mm
G	Centre Waste Position (width)	450mm	500mm
H	Corner Waste Position (depth)	450mm	500mm
I	LH Corner Waste Position (width)	250mm	N/A
J	LH Corner Waste Position (depth)	250mm	N/A
K	RH Corner Waste Position (width)	250mm	N/A
L	RH Corner Waste Position (depth)	250mm	N/A

## ORDERING CODES

PRODUCT DESCRIPTION	SKU CODE	
	900x900x900	1000x1000x1000
Complete Cubicle SILVA Centre Waste	SPF9X9X9SIFW	SPF1X1X1SIFW
Complete Cubicle BLACK Centre Waste	SPF9X9X9BLFW	SPF1X1X1BLFW
Corner Waste Tray Option (please add SKU and specify RH or LH)	CNRWOPTION	N/A
Tray Only Centre Waste	TFS9X9ALCCW	TFS1000ALCCW
Tray Only Corner Waste <b>LH</b>	TFS9X9ALCLHCNR	N/A
Tray Only Corner Waste <b>RH</b>	TFS9X9ALCRHCNR	N/A
Liner Only 2000mm High Flat	LB9X9X9FW3S2M	LB1X1X1FW3S2M
Door/Return Pack SILVA	AFD900ALC2MSYMP	AFD1000ALC2MSYMP
Door/Return Pack BLACK	AFD900ALC2MBLKSYP	AFD1000ALC2MBLKSYP

## WARRANTY INFORMATION

All bathroomware products supplied by Fibre Systems carry our Quality Assurance and Product Warranty. We use the highest quality materials available and manufacture these in accordance with New Zealand specifications and requirements to ensure that all products are fit for the intended purpose for which they are designed. Our customer's peace of mind is of paramount importance to us.

### Warranty Periods

Baths	10 years
Showers	10 years
Shower Screens and Doors	10 years
Silva and White Coatings	10 years
E-Line + Squareline + Dezine Showers	5 years
Black Coatings	5 years
Aquaknight Easy Clean Wastes	7 years
Accessories	2 years

### Warranty Exclusions

The product must be installed according to the instructions supplied.

The water supply temperature applied to the product must not exceed 55 degrees Celsius.

All cleaning and cleaning products must be in accordance with our cleaning instructions and guidance.

Commercial Applications (where products are installed in a building where occupancy is via a commercial arrangement i.e. a rental property, hotel, hostel etc) are restricted to a 2 year warranty on all products.



## CLEANING AND MAINTENANCE

Please refer to our cleaning instructions document for guidance - available on our website.