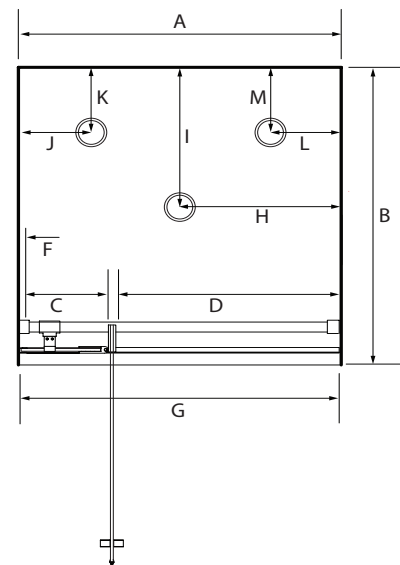


Premier Adjustable Frameless Pivot Alcove Showers



Pictured - 900 x 900 x 900 Alcove Black



DESCRIPTION

The Premier Adjustable Frameless Pivot Alcove range of showers can be purchased as a complete shower cubicle including Acrylic Tray, Wall Liner and Door Pack.

The Door Pack and Tray can also be purchased as individual items for installation on a tiled floor and/or wall.

SEE TILE SHOWER LAYOUT FOR SETOUT DIMENSIONS

FEATURES

- Frameless design with adjustable pivot hinges for easy door installation and adjustment
- Total OVERALL height 2060mm
- 2000mm high glass
- Silver, Black or White extrusions and hardware
- Low profile tray with 40mm upstand
- 8mm Safety Glass
- Door closes to glass return
- Minimalistic extrusion allows adjustment to wall and floor
- No silicone joints required for glass

LEGEND

| DIMENSION | DESCRIPTION | FRAMELESS ALCOVE RANGE | |
|-----------|-----------------------------------|------------------------|----------------|
| | | 900x900x900 | 1000x1000x1000 |
| A | Tray External Width | 900mm | 1000mm |
| B | Tray External Depth | 900mm | 1000mm |
| C | Hinge Panel Width (excl receiver) | 197mm | 297mm |
| D | Door Opening Width | 620mm | 620mm |
| E | Wall Receiver Width | 25mm | 25mm |
| F | Overall Opening (liner to Liner) | 875mm | 975mm |
| G | Centre Waste Position (width) | 450mm | 500mm |
| H | Corner Waste Position (depth) | 450mm | 500mm |
| I | LH Corner Waste Position (width) | 250mm | N/A |
| J | LH Corner Waste Position (depth) | 250mm | N/A |
| K | RH Corner Waste Position (width) | 250mm | N/A |
| L | RH Corner Waste Position (depth) | 250mm | N/A |

ORDERING CODES

| PRODUCT DESCRIPTION | SKU CODE | |
|---|-------------------|--------------------|
| | 900x900x900 | 1000x1000x1000 |
| Complete Cubicle SILVA Centre Waste | SPF9X9X9SIFW | SPF1X1X1SIFW |
| Complete Cubicle BLACK Centre Waste | SPF9X9X9BLFW | SPF1X1X1BLFW |
| Complete Cubicle WHITE Centre Waste | SPF9X9X9WHFW | SPF1X1X1WHFW |
| Corner Waste Tray Option (please add SKU and specify RH or LH) | CNRWOPTION | N/A |
| Tray Only Centre Waste | TFS9X9ALCCW | TFS1000ALCCW |
| Tray Only Corner Waste LH | TFS9X9ALCLHCNR | N/A |
| Tray Only Corner Waste RH | TFS9X9ALCRHCNR | N/A |
| Liner Only 2000mm High Flat | LB9X9X9FW3S2M | LB1X1X1FW3S2M |
| Door/Return Pack SILVA | AFD900ALC2MSYMP | AFD1000ALC2MSYMP |
| Door/Return Pack BLACK | AFD900ALC2MBLKSYP | AFD1000ALC2MBLKSYP |
| Door/Return Pack WHITE | AFD900ALC2MWHSYMP | AFD1000ALC2MWHSYMP |

WARRANTY INFORMATION

All bathroomware products supplied by Fibre Systems carry our Quality Assurance and Product Warranty. We use the highest quality materials available and manufacture these in accordance with New Zealand specifications and requirements to ensure that all products are fit for the intended purpose for which they are designed. Our customer's peace of mind is of paramount importance to us.

Warranty Periods

| | |
|------------------------------|----------|
| Baths | 10 years |
| Showers | 10 years |
| Shower Screens and Doors | 10 years |
| Silva and White Coatings | 10 years |
| Dezine Showers | 5 years |
| Black Coatings | 5 years |
| Aquaknight Easy Clean Wastes | 7 years |
| Accessories | 2 years |

Warranty Exclusions

The product must be installed according to the instructions supplied.

The water supply temperature applied to the product must not exceed 55 degrees Celsius.

All cleaning and cleaning products must be in accordance with our cleaning instructions and guidance.

Commercial Applications (where products are installed in a building where occupancy is via a commercial arrangement i.e. a rental property, hotel, hostel etc) are restricted to a 2 year warranty on all products.



CLEANING AND MAINTENANCE

Please refer to our cleaning instructions document for guidance - available on our website.