



# fibre

systems

raising the standard in showers  
since 1986



symphony  
showersystems

PINNACLE  
COLLECTION

2025

02/25





NATURAL  
STRENGTH

FORGING NEW  
PATHWAYS



EMBRACING  
NATURE

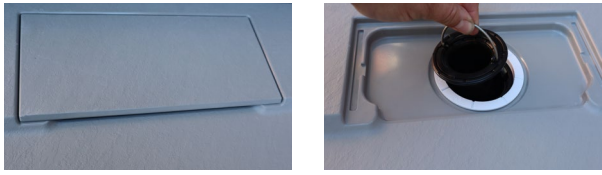


Pinnacle shower trays utilise new technology and materials to re-imagine natural durability and strength.

Embracing nature in your bathroom has never been easier.

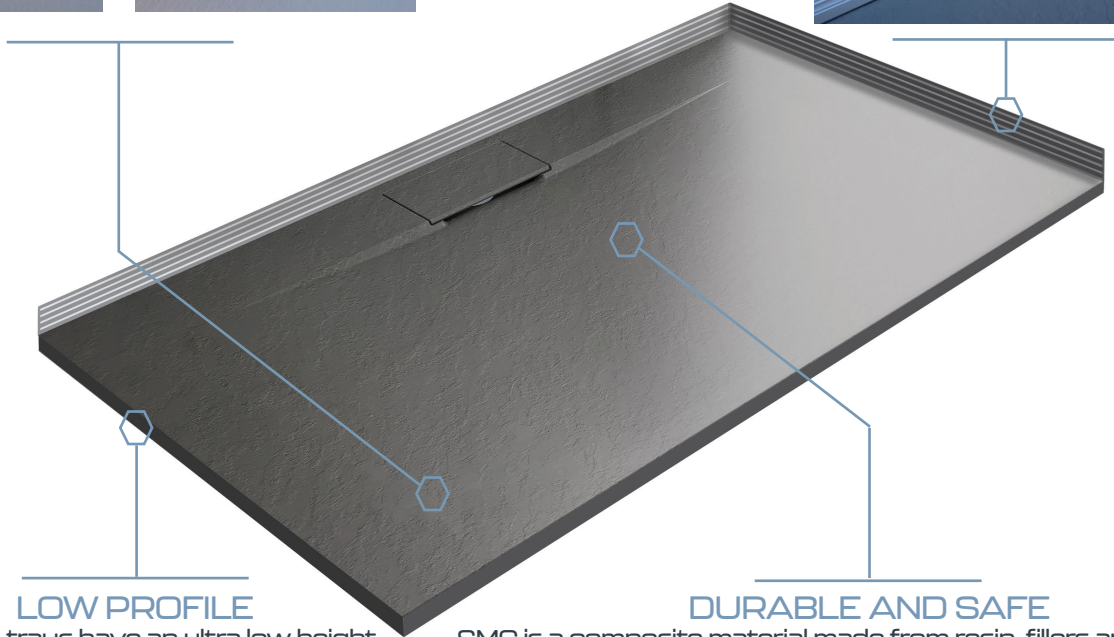
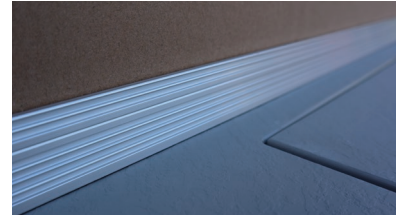
## SEAMLESS DESIGN

Symphony Pinnacle trays feature a hidden waste design. An easy clean waste is hidden under a cover lid. Water exits the tray via a waste "slot" and when cleaning is required, the lid easily lifts up revealing the waste and the removable waste bucket.



## WATERTIGHT STRENGTH

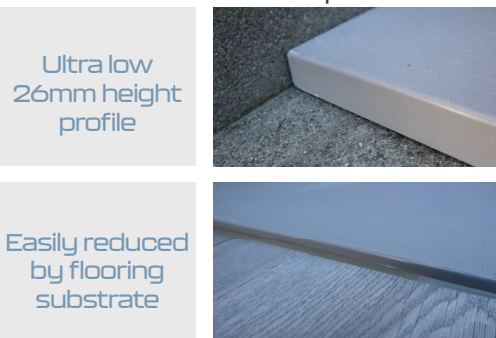
Watertightness is just as important as strength. That's why Pinnacle trays feature factory-fitted 30mm high Aluminium Upstands which feature horizontal ribs to aid sealant or waterproofing material retention



## LOW PROFILE

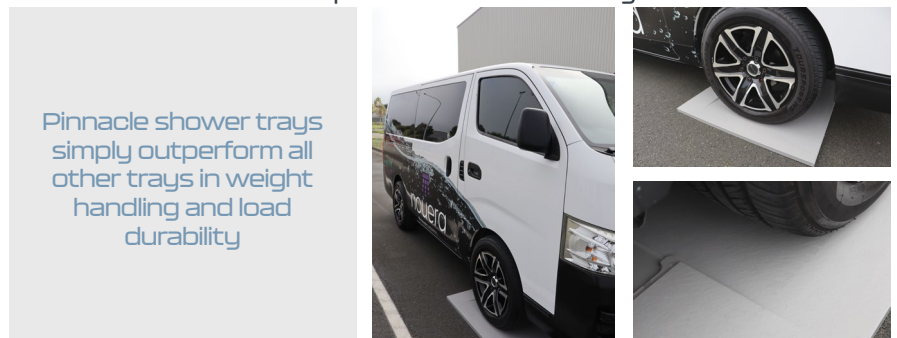
Pinnacle trays have an ultra low height profile of 26mm. This could easily be lowered with flooring installation up to the side of the tray.

Pinnacle trays can also be recessed into the floor if required.



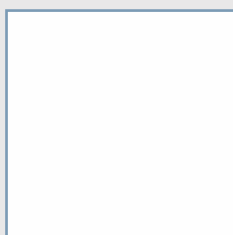
## DURABLE AND SAFE

SMC is a composite material made from resin, fillers and glass fibre. The material is poured into precision alloy moulds at over 150°C and compressed, leaving a precise, solid form which will not distort, discolour, or break down after years of use. The surface is finished to mimic natural slate, which also provides a non-slip finish for added safety.

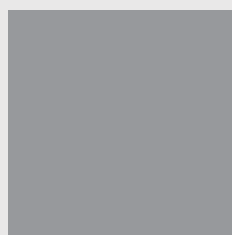


## COLOUR OPTIONS

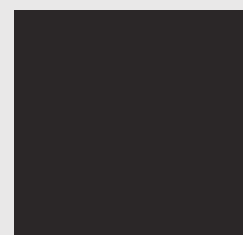
Pinnacle trays are available in 3 naturally finished colours.



Natural White



Natural Grey



Natural Black

**NEW ! - White/ Marble effect trays in limited sizes**



# Wall Lining Features

## EASY TO CLEAN

Symphony Pinnacle Wall Linings are available in Slate, and Tiled patterns. All effects and tile patterns are moulded - not milled into the sheet providing smooth easy to clean "grout effect lines".

## EASY TO INSTALL

Pinnacle Wall Linings are supplied in standard 2000mm high x 1200mm wide sheets.

All Wall Linings are easy to cut to size to suit the width of your shower. All panels are easy to drill, lightweight and durable to handle, and have a compliment of colour coded corner and straight joiners which fit to the sheets with ease.



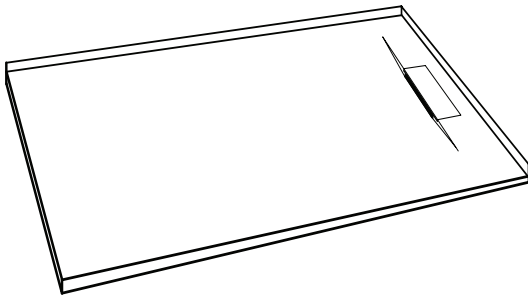
## QUALITY AESTHETICS

Every sheet of Pinnacle Wall lining is manufactured identical to the next, tile and pattern alignment is easy.

## DURABLE SAFE AND EFFICIENT

Symphony Pinnacle Wall Linings are manufactured from the same SMC material as Pinnacle Trays providing a durable sheet which is strong but lightweight, easy to adhere to wall substrates and which will not fade, and dull over time.

## CONFIGURATION OPTIONS



### Tray Only

Pinnacle shower trays can be purchased as a tray only, complete with factory fitted upstand. Trays are supplied standard with a side outlet easy clean waste, bottom outlet is an optional code.

This allows you to finish your walls and enclosure with your own and choice of materials or door systems.

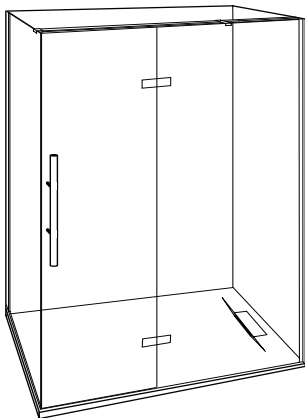
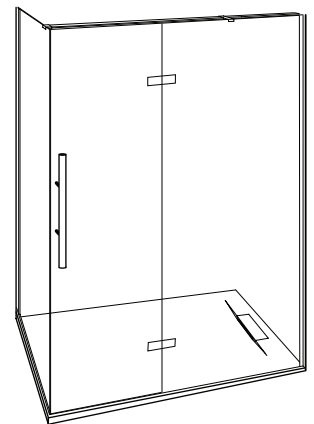
Please remember to check our tray specification sheets to ensure our tray will suit your installation requirements.

### Tray + Enclosure Glass

Another option is to purchase a shower tray AND door system.

This allows for flexibility with wall substrates and finishes, but means the tray and door systems will work seamlessly.

Remember to check our door specification sheets as our door systems are designed to fit our trays, and it is important to ensure they will work within your project measurements.



### Complete Cubicle

And the most popular option is to purchase a complete shower cubicle. This provides a simple to install, leak free installation which is very easy to clean and cost effective to install.

Simply add the Pinnacle tray upgrade to any applicable Symphony Shower cubicle.

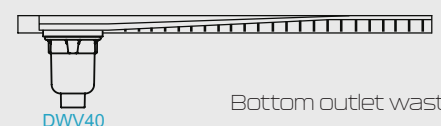
## EASY CLEAN WASTE

Pinnacle trays are supplied STANDARD with a side outlet easy clean waste. A bottom outlet waste is an option. This waste is specific to Pinnacle trays.

Please specify SKU - BOTTOMEXIT when ordering.



Side outlet waste



Bottom outlet waste

# Pinnacle Alcove Trays

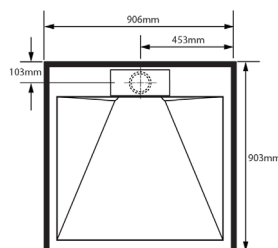
## 900x900x900

900x900x900 Alcove trays are the perfect tray for the small ensuite, or laundry to bathroom conversion.

These trays can be fitted with both our Frameless and framed pivoting door showers, however space saving stacking doors can also be fitted where external space is limited.

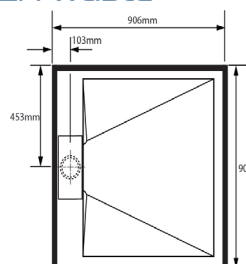
- Limited projection into bathroom
- 3 waste outlet options
- Suit pivot and stacking doors
- Perfect replacement standard size shower enclosures

### Rear waste



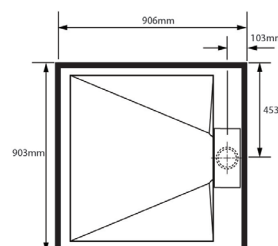
Black  
PT9X9X9RCWBL  
White  
PT9X9X9RCWWH  
Grey  
PT9X9X9RCWGY  
Marble  
PT9X9X9RCWMARBLEWH

### LH waste



Black  
PT9X9X9LHBL  
White  
PT9X9X9LHWH  
Grey  
PT9X9X9LHGY  
Marble  
PT9X9X9LHMARBLEWH

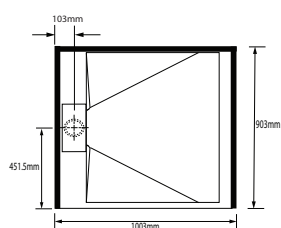
### RH waste



Black  
PT9X9X9RHBL  
White  
PT9X9X9RHWH  
Grey  
PT9X9X9RHGY  
Marble  
PT9X9X9RHMARBLEWH

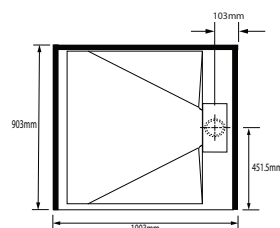
## 900x1000x900

### LH waste



Black  
PT9X1X9LHBL  
White  
PT9X1X9LHWH  
Grey  
PT9X1X9LHGY

### RH waste



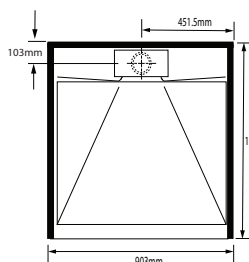
Black  
PT9X1X9RHBL  
White  
PT9X1X9RHWH  
Grey  
PT9X1X9RHGY

## 1000x900x1000

1000x900x1000 Alcove trays provide a little extra depth where a 900mm wide tray only can fit. Every centimeter counts in small bathrooms so you can go just that little bit larger without compromising width.

- Increased projection into bathroom
- 1 waste outlet option
- Suit pivot and stacking doors
- when you've only got 900mm side, but depth is more flexible

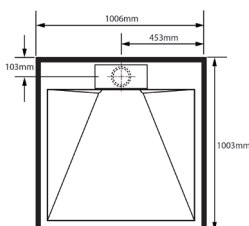
### Rear waste



Black  
PT1X9X1RCWBL  
White  
PT1X9X1RCWWH  
Grey  
PT1X9X1RCWGY

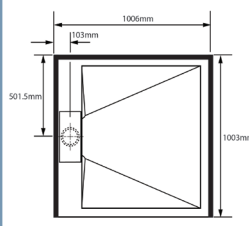
## 1000x1000x1000

### Rear waste



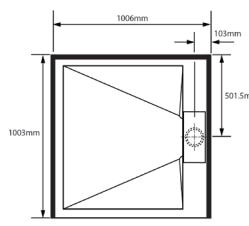
Black  
PT1X1X1RCWBL  
White  
PT1X1X1RCWWH  
Grey  
PT1X1X1RCWGY  
LIMITED STOCK OF CENTRE WASTE TRAYS AVAILABLE

### LH waste



Black  
PT1X1X1LHBL  
White  
PT1X1X1LHWH  
Grey  
PT1X1X1LHGY  
LIMITED STOCK OF CENTRE WASTE TRAYS AVAILABLE

### RH waste



Black  
PT1X1X1RHBL  
White  
PT1X1X1RHWH  
Grey  
PT1X1X1RHGY  
LIMITED STOCK OF CENTRE WASTE TRAYS AVAILABLE

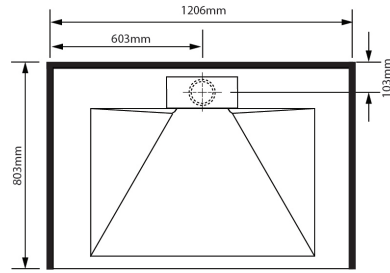
## 800x1200x800

800x1200x800 Alcove trays are the ultimate space saver, providing ample width, but limiting your showering area projection into the rest of the bathroom.

Sliding doors also aid space saving and keep water in the showering area.

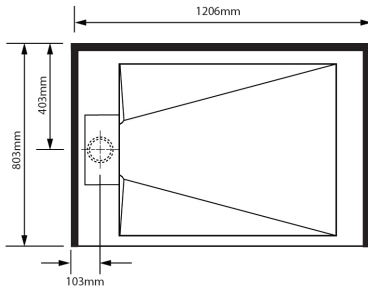
- Limited projection into bathroom
- 3 waste outlet options
- Suit pivot and sliding doors
- Perfect replacement for a 3 sided Shub.

### Rear waste



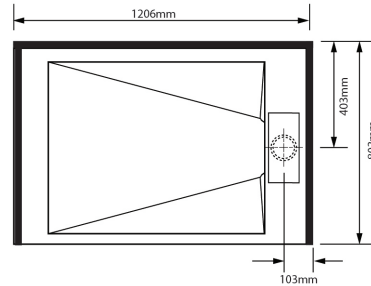
Black  
PT8X12X8RCWBL  
White  
PT8X12X8RCWWH  
Grey  
PT8X12X8RCWGY

### LH waste



Black  
PT8X12X8LHBL  
White  
PT8X12X8LHWH  
Grey  
PT8X12X8LHGY

### RH waste



Black  
PT8X12X8RHBL  
White  
PT8X12X8RHWH  
Grey  
PT8X12X8RHGY

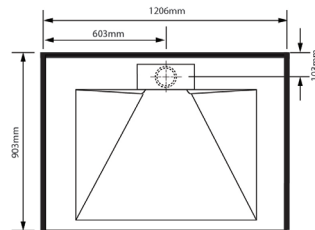
## 900x1200x900

900x1200x900 Alcove trays provide luxurious interior space and do not extend deeper than a standard shower, they can fit into almost every bathroom space.

Pinnacle trays offer 3 outlet positions to cater for all waste and water outlet positions.

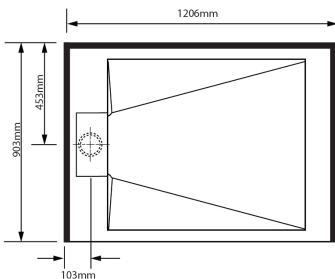
- Luxurious interior space.
- 3 waste outlet options
- Suit pivot and sliding doors
- Perfect replacement for a 3 sided Shub.
- Same projection as standard 900mm shower

### Rear waste



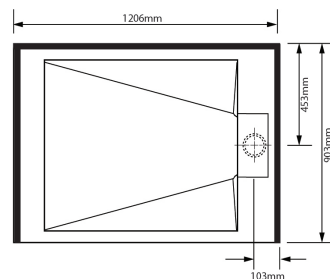
Black  
PT9X12X9RCWBL  
White  
PT9X12X9RCWWH  
Grey  
PT9X12X9RCWGY

### LH waste



Black  
PT9X12X9LHBL  
White  
PT9X12X9LHWH  
Grey  
PT9X12X9LHGY  
Marble  
PT9X12X9LHMARBLEWH

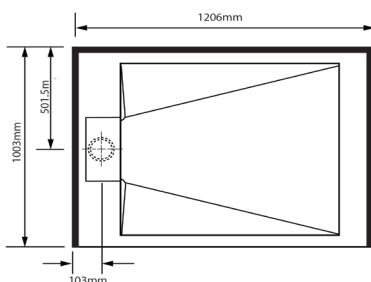
### RH waste



Black  
PT9X12X9RHBL  
White  
PT9X12X9RHWH  
Grey  
PT9X12X9RHGY  
Marble  
PT9X12X9RHMARBLEWH

## 1000x1200x1000

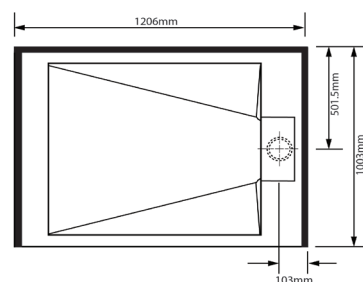
### LH waste



Black  
PT1X12X1LHBL  
White  
PT1X12X1LHWH  
Grey  
PT1X12X1LHGY

LIMITED STOCK OF  
CENTRE WASTE  
TRAYS AVAILABLE

### RH waste



Black  
PT1X12X1RHBL  
White  
PT1X12X1RHWH  
Grey  
PT1X12X1RHGY

LIMITED STOCK OF  
CENTRE WASTE  
TRAYS AVAILABLE

# Pinnacle Alcove Trays

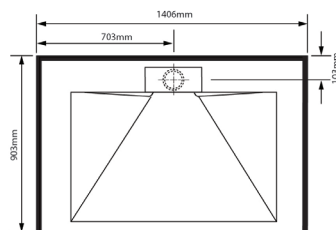
## 900x1400x900

900x1400x900 Alcove trays can create new options for bathrooms. Removing a shower over bath or Shub? Add luxury and space by optimising the width available, but keeping a similar projection into the bathroom.

Pinnacle trays offer 3 waste outlet positions to cater for all waste and water outlet positions.

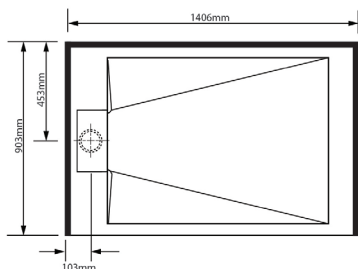
- Standard 900mm projection
- 3 waste options
- Suit pivot and sliding doors
- Perfect replacement for a 3 sided Shub shower over bath.
- Fill one end wall of the bathroom with a spacious shower.

### Rear waste



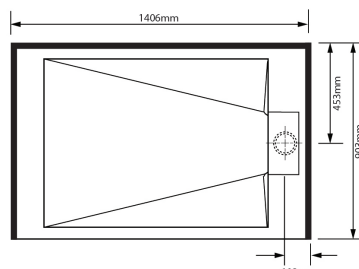
Black  
PT9X14X9RCWBL  
White  
PT9X14X9RCWWH  
Grey  
PT9X14X9RCWGY

### LH waste



Black  
PT9X14X9LHBL  
White  
PT9X14X9LHWH  
Grey  
PT9X14X9LHGY

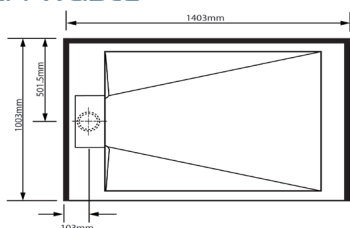
### RH waste



Black  
PT9X14X9RHBL  
White  
PT9X14X9RHWH  
Grey  
PT9X14X9RHGY

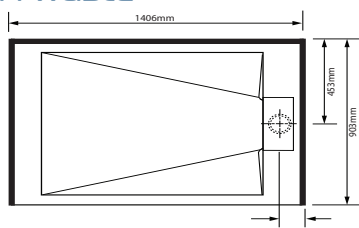
## 1000x1400x1000

### LH waste



Black  
PT1X14X1LHBL  
White  
PT1X14X1LHWH  
Grey  
PT1X14X1LHGY

### RH waste



Black  
PT1X14X1RHBL  
White  
PT1X14X1RHWH  
Grey  
PT1X14X1RHGY

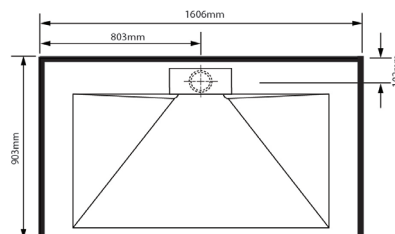
## 900x1600x900

900x1600x900 Alcove trays provide a huge showering space. The ultimate replacement for a 3 sided shower over bath, or design with a complete wall to be a showering paradise.

Pinnacle trays offer 3 waste outlet positions to cater for all waste and water outlet positions.

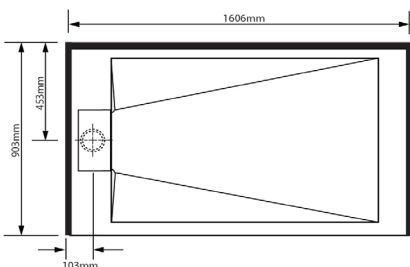
- Standard 900mm projection
- 3 waste outlet options
- Suit pivot and sliding doors
- Perfect replacement for a 3 sided Shub. shower over bath.
- Fill one end wall of the bathroom with a spacious shower.

### Rear waste



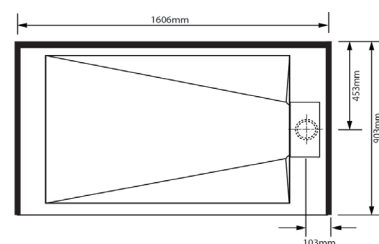
Black  
PT9X16X9RCWBL  
White  
PT9X16X9RCWWH  
Grey  
PT9X16X9RCWGY

### LH waste



Black  
PT9X16X9LHBL  
White  
PT9X16X9LHWH  
Grey  
PT9X16X9LHGY

### RH waste



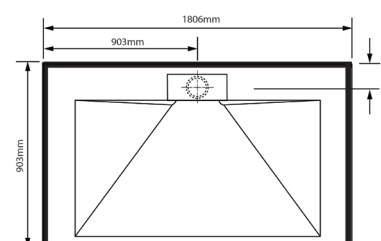
Black  
PT9X16X9RHBL  
White  
PT9X16X9RHWH  
Grey  
PT9X16X9RHGY

## 900x1800x900

900x1800x900 Alcove trays provide a huge showering space. The ultimate replacement for a 3 sided shower over bath, or design with a complete wall to be a showering paradise.

- Standard 900mm projection
- Only available in Rear Centre Waste
- Suit pivot and sliding doors
- Perfect replacement for a 3 sided Shub. shower over bath.
- Fill one end wall of the bathroom with a spacious shower.

### Rear waste

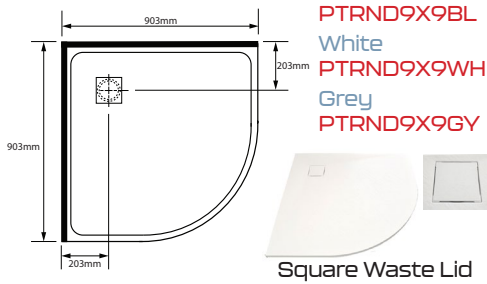


Black  
PT9X18X9RCWBL  
White  
PT9X18X9RCWWH  
Grey  
PT9X18X9RCWGY

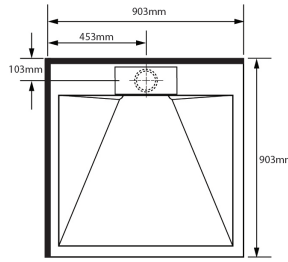


## 900x900

Round Corner

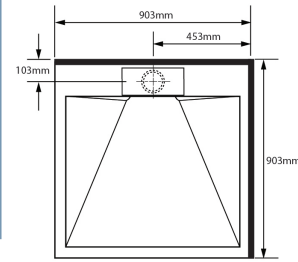


Square  
LH waste



Black  
PT9X9LHBL  
White  
PT9X9LHWH  
Grey  
PT9X9LHGY  
Marble  
PT9X9LH  
MARBLEWH

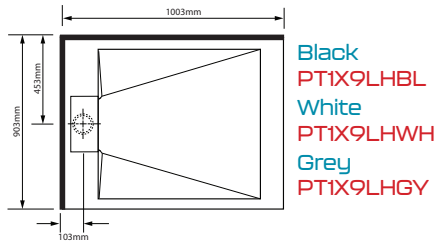
RH waste



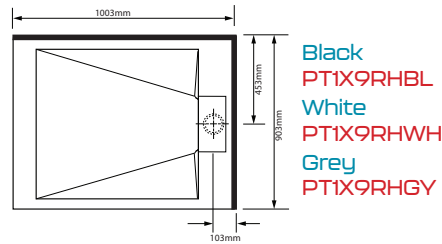
Black  
PT9X9RHBL  
White  
PT9X9RHWH  
Grey  
PT9X9RHGY  
Marble  
PT9X9RH  
MARBLEWH

## 1000x900

LH waste

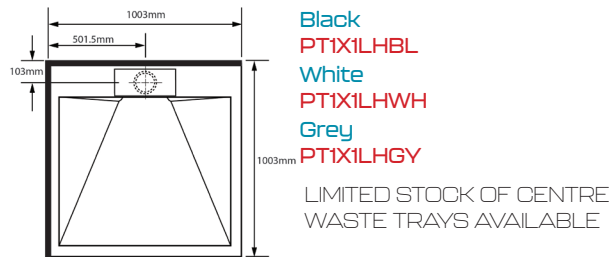


RH waste

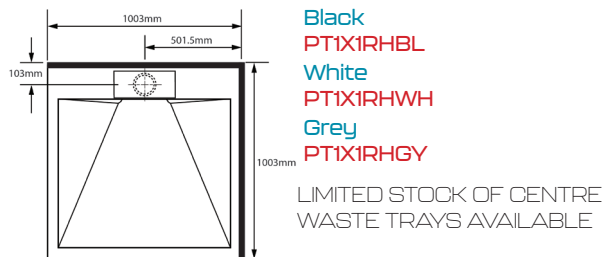


## 1000x1000

LH Waste



RH Waste



## NEW - MARBLE WHITE TRAY

In a very limited range of sizes and configurations, we have launched our very latest color / finish option. Marble effect patterning on a natural white tray.

Designed to offer another "stone effect" finish option to suit luxury bathroom interiors, this latest finish is both naturally attractive and durable.

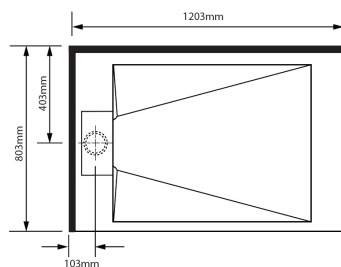
Available ONLY in sizes 1200x900, 900x1200x900, 900x900 Square, this tray compliments all our wall lining options, and is highly attractive when installed in conjunction with Slate natural finish linings.



# Pinnacle 2 Sided Trays

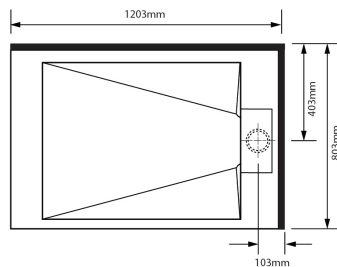
## 1200x800

### LH waste



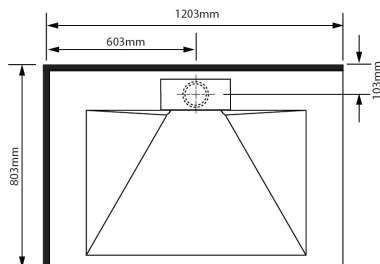
Black  
PT12X8LHSWBL  
White  
PT12X8LHSWWH  
Grey  
PT12X8LHSWGy

### RH waste



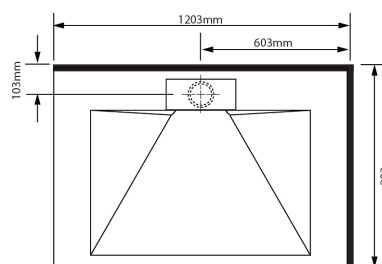
Black  
PT12X8RHSWBL  
White  
PT12X8RHSWWH  
Grey  
PT12X8RHSWGy

### LH Rear waste



Black  
PT12X8LHRCWBL  
White  
PT12X8LHRCWWH  
Grey  
PT12X8LHRCWGy

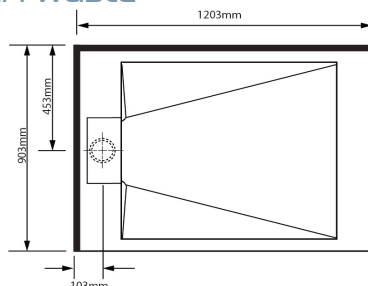
### RH Rear waste



Black  
PT12X8RHRCWBL  
White  
PT12X8RHRCWWH  
Grey  
PT12X8RHRCWGy

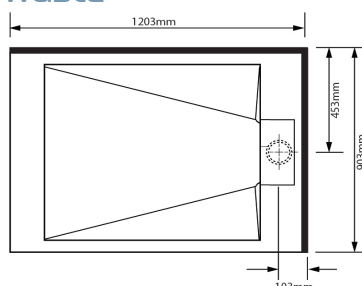
## 1200x900

### LH waste



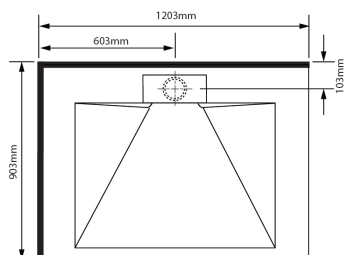
Black  
PT12X9LHSWBL  
White  
PT12X9LHSWWH  
Grey  
PT12X9LHSWGy  
Marble / White  
PT12X9LHSWMBWH

### RH waste



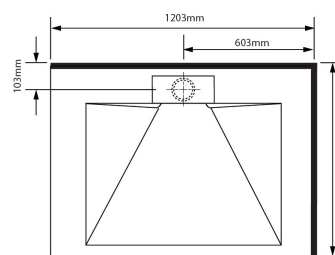
Black  
PT12X9RHSWBL  
White  
PT12X9RHSWWH  
Grey  
PT12X9RHSWGy  
Marble / White  
PT12X9RHSWMBWH

### LH Rear waste



Black  
PT12X9LHRCWBL  
White  
PT12X9LHRCWWH  
Grey  
PT12X9LHRCWGy

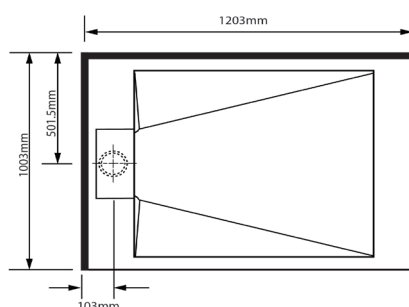
### RH Rear waste



Black  
PT12X9RHRCWBL  
White  
PT12X9RHRCWWH  
Grey  
PT12X9RHRCWGy

## 1200x1000

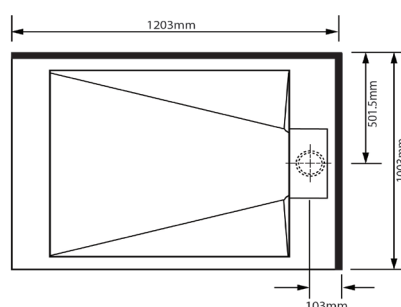
### LH waste



Black  
PT12X1LHSWBL  
White  
PT12X1LHSWWH  
Grey  
PT12X1LHSWGy

LIMITED STOCK OF  
CENTRE WASTE  
TRAYS AVAILABLE

### RH waste

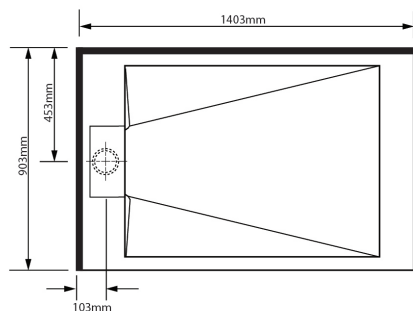


Black  
PT12X1RHSWBL  
White  
PT12X1RHSWWH  
Grey  
PT12X1RHSWGy

LIMITED STOCK OF  
CENTRE WASTE  
TRAYS AVAILABLE

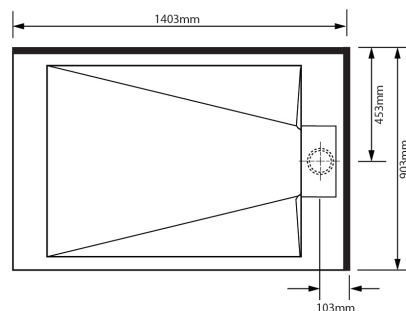
## 1400x900

### LH waste



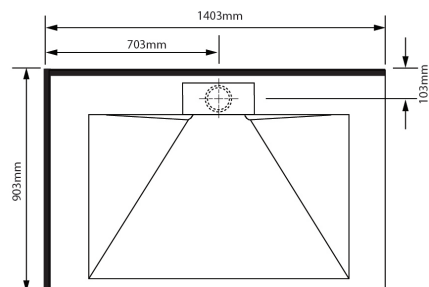
Black  
PT14X9LHSWBL  
White  
PT14X9LHSWWH  
Grey  
PT14X9LHSWGY

### RH waste



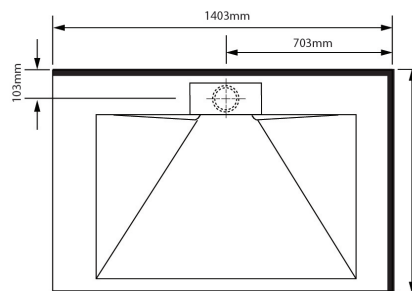
Black  
PT14X9RHSWBL  
White  
PT14X9RHSWWH  
Grey  
PT14X9RHSWGY

### LH Rear waste



Black  
PT14X9LHRCWBL  
White  
PT14X9LHRCWWH  
Grey  
PT14X9LHRCWGY

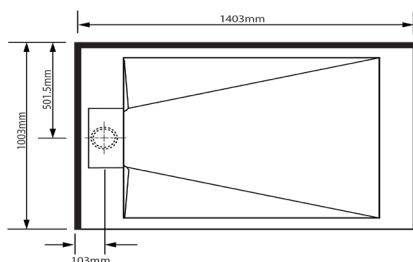
### RH Rear waste



Black  
PT14X9RHRCWBL  
White  
PT14X9RHRCWWH  
Grey  
PT14X9RHRCWGY

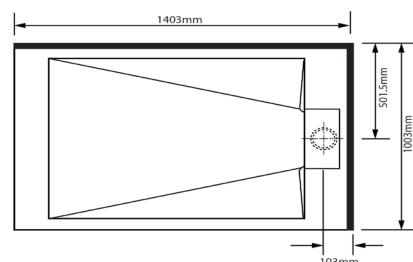
## 1400x1000

### LH waste



Black  
PT14X1LHSWBL  
White  
PT14X1LHSWWH  
Grey  
PT14X1LHSWGY

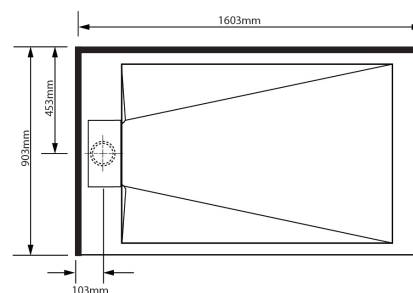
### RH waste



Black  
PT14X1RHSWBL  
White  
PT14X1RHSWWH  
Grey  
PT14X1RHSWGY

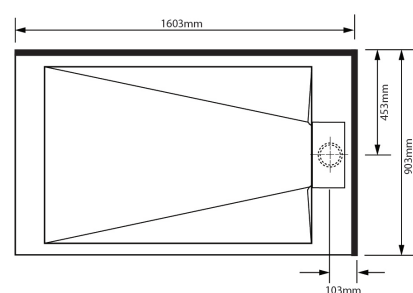
## 1600x900

### LH waste



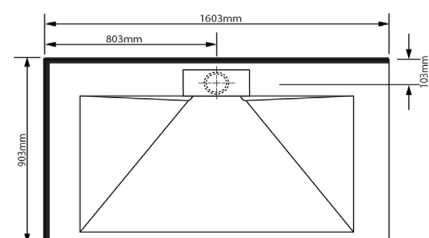
Black  
PT16X9LHSWBL  
White  
PT16X9LHSWWH  
Grey  
PT16X9LHSWGY

### RH waste



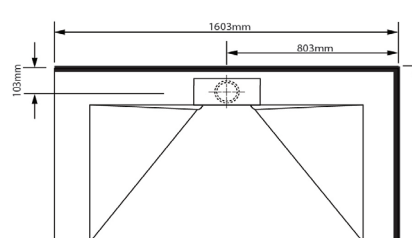
Black  
PT16X9RHSWBL  
White  
PT16X9RHSWWH  
Grey  
PT16X9RHSWGY

### LH Rear waste



Black  
PT16X9LHRCWBL  
White  
PT16X9LHRCWWH  
Grey  
PT16X9LHRCWGY

### RH Rear waste



Black  
PT16X9RHRCWBL  
White  
PT16X9RHRCWWH  
Grey  
PT16X9RHRCWGY



# How To Order Trays

Ordering a Symphony Shower cubicle with a Pinnacle tray upgrade is as easy as 1,2,3.

## Step 1

Identify the size, the upstand configuration, eg LH or RH, and the waste position of the Pinnacle shower tray you plan to install using this brochure.

## Step 2

Go to the Symphony Showers brochure, and identify the door type you wish to install onto your tray.

Then identify the cubicle which matches

- a. The same size Pinnacle tray
- b. The same LH and RH configuration of the Pinnacle tray required.

## Step 3

Order the correct codes by simply -

- a. Ordering the shower using the code selected in Step 2.
- b. Adding one of the following codes for the Pinnacle tray :
  - White Tray - Add PTUPGRADEWHITE
  - Black Tray - Add PTUPGRADEBLACK
  - Grey Tray - Add PTUPGRADEGREY
  - Marble Tray - Add PTUPGRADEMARBLE
- c. Finally, specify the waste position of the tray on your purchase order by placing a comment noting either -
  - LH Waste
  - Rear Waste
  - RH Waste



Pictured - 1200 x 900 Symphony Premier frameless sliding door RH Tray Black door.  
SKU Code SP12X9BLFWRH



Pictured - 1200 x 900 Symphony Premier Frameless Black sliding door and Grey Pinnacle tray with RH Waste .

To Order this then the following should be shown on the order

SP12X9BLFWRH , PTUPGRADEGREY,  
then comment RH Side Waste

## UPGRADING a Symphony Acrylic Shower Cubicle to Pinnacle Wall Linings

UPGRADING a Symphony **ACRYLIC** shower with a Pinnacle wall lining upgrade is also simple, just follow 2 easy steps.

### Step 1

Identify the size, door type and the SKU code of the Symphony Acrylic shower you wish to purchase.

### Step 2

Select a Pinnacle Wall lining (pages 14-18) and choose the lining type and colour, and simply order the correct upgrade code to suit your shower.

**NOTE** - take care to ensure you have ordered the correct code for a 2 or 3 sided cubicle.

And remember showers 1400x900 and above require the LARGE upgrade code.



Pictured - 1200 x 900 Symphony Premier frameless sliding door RH Tray Black door.  
**SKU Code SP12X9BLFWRH**

## Adding Pinnacle Wall linings to any shower installation.

If you are **not** upgrading a Symphony Shower, the upgrade codes are not applicable, and individual items must be ordered.

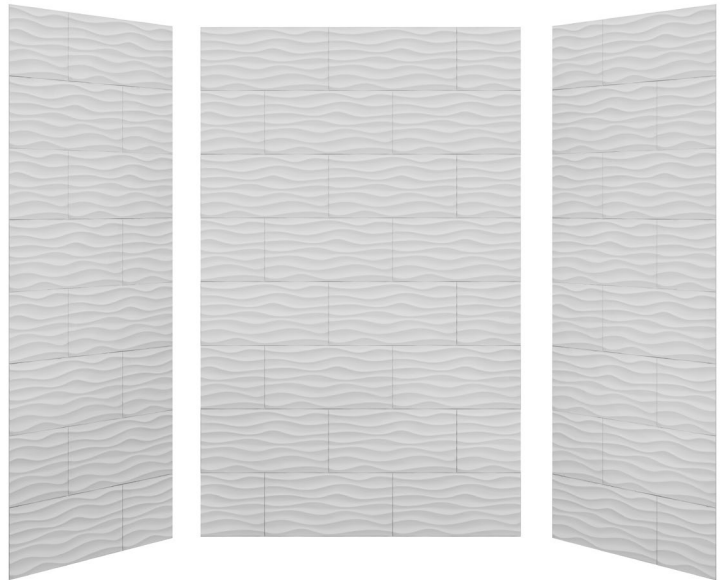
### PLEASE NOTE -

All Pinnacle Wall linings sheets are 1200mm wide x 2000mm high - measure the area required and order accordingly.

INTERNAL corner joiners, straight joiners and end caps are available in 3 matching colours - see page 19 for details.

Straight joiners can also be installed horizontally to extend the height of sheets as required but we recommend this is installed above the finished glass height of the shower.

External corners are not available.





Pictured - 1200x900 Symphony Frameless Black LH with 2 sided Subway tile upgrade

**SKU CODES**  
SP12X9BLFWLH  
then add PWALLUGSUBWAY2S

## Subway Tiles white / White

The timeless design of gloss white Subway tiles with the watertightness of a shower liner.

Easy-clean, gloss finish with no grout or exposed silicone joints to collect dirt or create mould zones.

Supplied in 2000H x 1200W x 3.2mm thick sheets.

## Ordering Codes

### UPGRADE KITS

#### For Shower Sizes UP TO 1200x1000

PWALLUGSUBWAY2S 2 sided shower subway gloss white

PWALLUGSUBWAY3S 3 sided shower subway gloss white

#### For Shower Sizes 1400x900 and above

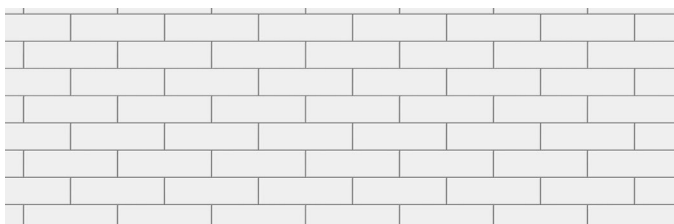
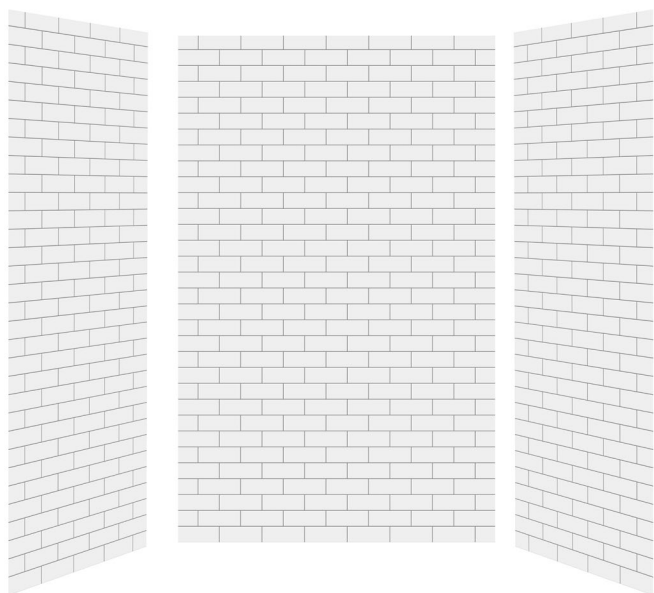
PWALLUGSUBWAY2SLARGE 2 sided shower subway gloss white large

PWALLUGSUBWAY3SLARGE 3 sided shower subway gloss white large

### INDIVIDUAL SHEETS

PWALLSUBWAYWH 1200wx2000h subway gloss white sheet

PWALLSUBWAYWH1524X2438 1524wx2438h subway gloss white sheet



## Subway Tiles white / Grey

The timeless design of gloss white Subway tiles with a contrasting grey grout line all in one complete wall lining sheet

Easy-clean, gloss finish with no grout or exposed silicone joints to collect dirt or create mould zones.

Supplied in 2000H x 1200W x 3.2mm thick sheets.

## Ordering Codes

### UPGRADE KITS

#### For Shower Sizes UP TO 1200x1000

PWALLUGSUBWAYGW2S 2 sided shower subway gloss white

PWALLUGSUBWAYGW3S 3 sided shower subway gloss white

#### For Shower Sizes 1400x900 and above

PWALLUGSUBWAYGW2SLARGE 2 sided shower subway gloss white large

PWALLUGSUBWAYGW3SLARGE 3 sided shower subway white + grey grout

### INDIVIDUAL SHEETS

PWALLSUBWAYGYWH 1200wx2000h subway white with grey grout



## Hexagonal Tiles

Enjoy the look of classic hexagonal tiles, with the watertightness of a shower liner.

Easy-clean, gloss finish with no grout or exposed silicone joints to collect dirt or create mould zones.

Supplied in 2000H x 1200W x 3.2mm thick sheets.

## Ordering Codes

### UPGRADE KITS

**For Shower Sizes UP TO 1200x1000**

PWALLUGHEXAGON2S 2 sided shower  
hexagon gloss white

PWALLUGHEXAGON3S 3 sided shower  
hexagon gloss white

**For Shower Sizes 1400x900 and above**

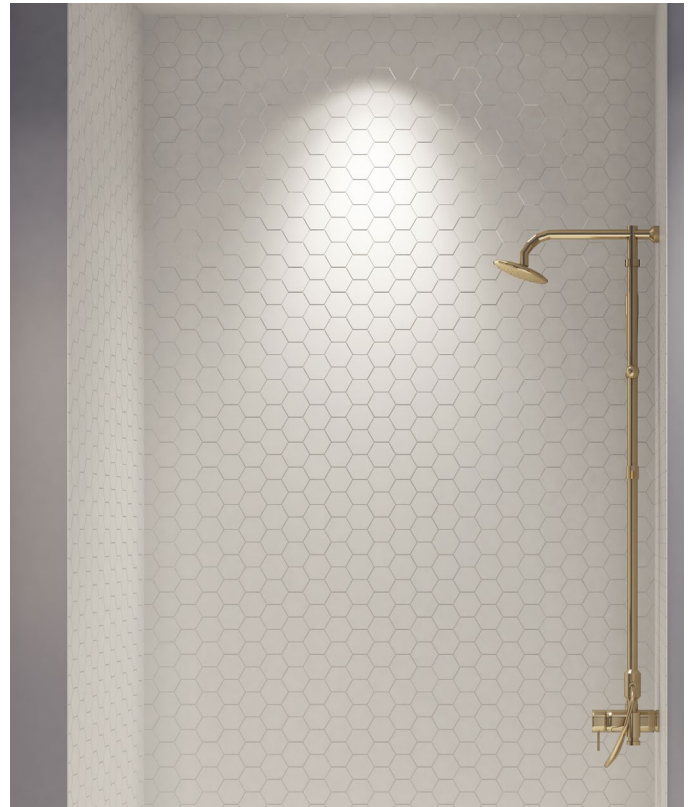
PWALLUGHEXAGON2SLARGE 2 sided shower  
hexagon gloss white Large

PWALLUGHEXAGON3SLARGE 3 sided shower  
hexagon gloss white Large

### INDIVIDUAL SHEETS

PWALLHEXAGONWH 1200wx2000h hexagon gloss  
white sheet

PWALLHEXAGONWH1524x2438 1524wx2434h hexagon gloss  
white sheet



Pictured - 900x1200x900 Alcove installation with hex white pattern walls

## 3D Hexagonal Tiles

Enjoy the look of classic hexagonal tiles, with a modern 3D twist, all with the watertightness of a shower liner.

Easy-clean, gloss finish with 3D patterned effect and no grout or exposed silicone joints to collect dirt or create mould zones.

## Ordering Codes

### UPGRADE KITS

**For Shower Sizes UP TO 1200x1000**

PWALLUGHEXAGON3D2S 2 sided shower  
hexagon gloss white

PWALLUGHEXAGON3D3S 3 sided shower  
hexagon gloss white

**For Shower Sizes 1400x900 and above**

PWALLUGHEXAGON3D2SLARGE 2 sided shower  
hexagon gloss white Large

PWALLUGHEXAGON3D3SLARGE 3 sided shower  
hexagon gloss white Large

### INDIVIDUAL SHEETS

PWALLHEXAGON3DWH 1200wx2000h 3D hexagon gloss  
white sheet



Pictured - 900x1200x900 Alcove installation with 3D Hexagon white pattern walls



## Textured Vertical Tiles

Supplied in 2000H x 1200W x 3.2mm thick sheets.

Horizontal Wave Tile Design with textured Natural matt finish.

Available in Natural White and Natural Grey which colour matches to trays.

Easy-clean, finish with no grout or exposed silicone joints to collect dirt or create mould zones.

Supplied in complete "upgrade kits" for your Symphony shower cubicle, or as individual sheets.



Pictured - 900x1200x900 Alcove installation vertical textured tile white

## Ordering Codes

### UPGRADE KITS

#### For Shower Sizes UP TO 1200x1000

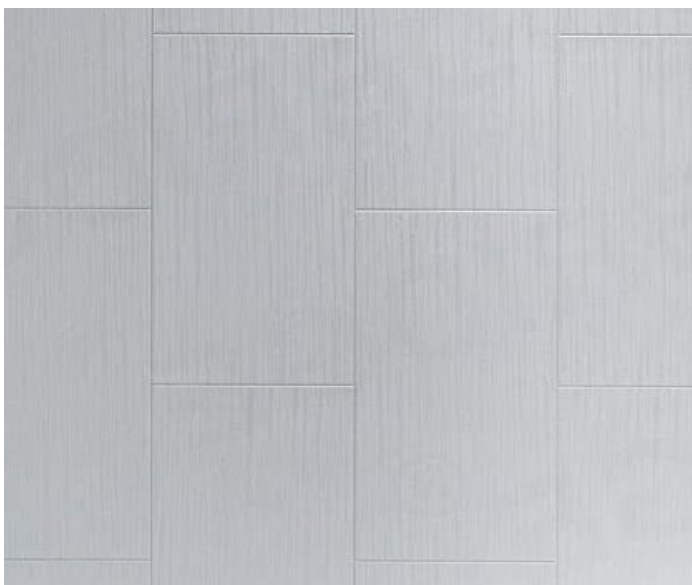
PWALLUGVTEXBL2S	2 sided shower black VTEX
PWALLUGVTEXBL3S	3 sided shower black VTEX
PWALLUGVTEXGREY2S	2 sided shower grey VTEX
PWALLUGVTEXGREY3S	3 sided shower grey VTEX
PWALLUGVTEXWH2S	2 sided shower white VTEX
PWALLUGVTEXWH3S	3 sided shower white VTEX

#### For Shower Sizes 1400x900 and above

PWALLUGVTEXBL2SLARGE	2 sided shower black VTEX
PWALLUGVTEXBL3SLARGE	3 sided shower black VTEX
PWALLUGVTEXGREY2SLARGE	2 sided shower grey VTEX
PWALLUGVTEXGREY3SLARGE	3 sided shower grey VTEX
PWALLUGVTEXWH2SLARGE	2 sided shower white VTEX
PWALLUGVTEXWH3SLARGE	3 sided shower white VTEX

### INDIVIDUAL SHEETS

PWALLVTEXBL	1200wx2000h VTEX black sheet
PWALLVTEXGREY	1200wx2000h VTEX grey sheet
PWALLVTEXWH	1200wx2000h VTEX white sheet
PWALLVTEXWH1524x2438	1524wx2438h VTEX white sheet large



Pictured - Vertical textured tile white



## Natural Slate

Supplied in 2000H x 1200W x 3.2mm thick sheets.

Natural Slate Finish, which is easy to clean and durable.

Lightweight to handle and install.

Available in Natural White, Natural Grey and Natural Black which colour matches to trays.

Easy-clean, finish with no grout or exposed silicone joints to collect dirt or create mould zones.

Supplied in complete "upgrade kits" for your Symphony shower cubicle, or as individual sheets.

## Ordering Codes

### UPGRADE KITS SLATE

#### For Shower Sizes UP TO 1200x1000

PWALLUGSLATEBL2S	2 sided shower black slate
PWALLUGSLATEBL3S	3 sided shower black slate
PWALLUGSLATEGREY2S	2 sided shower grey slate
PWALLUGSLATEGREY3S	3 sided shower grey slate
PWALLUGSLATEWH2S	2 sided shower white slate
PWALLUGSLATEWH3S	3 sided shower white slate

#### For Shower Sizes 1400x900 and above

PWALLUGSLATEBL2SLARGE	2 sided shower black slate large
PWALLUGSLATEBL3SLARGE	3 sided shower black slate large
PWALLUGSLATEGREY2SLARGE	2 sided shower grey slate large
PWALLUGSLATEGREY3SLARGE	3 sided shower grey slate large
PWALLUGSLATEWH2SLARGE	2 sided shower white slate large
PWALLUGSLATEWH3SLARGE	3 sided shower white slate large

### INDIVIDUAL SHEETS

PWALLSLATEBL	1200wx2000h slate black sheet
PWALLSLATEGREY	1200wx2000h slate grey sheet
PWALLSLATEWH	1200wx2000h slate white sheet



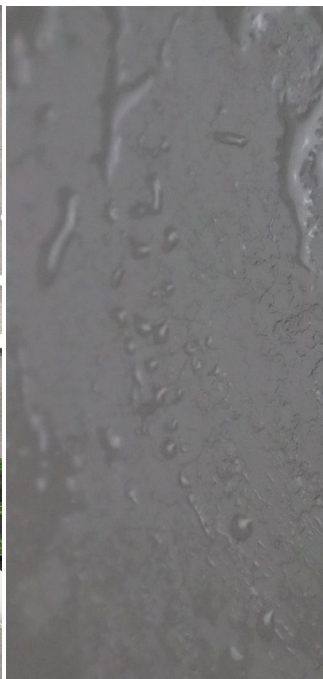
Pictured - 900x1200x900 Alcove installation black slate wall linings



Pictured - 1200x900 2sided Black Slate Walls, White Pinnacle Tray



Pictured - 1200x900 2sided Black Slate Walls, Black Pinnacle Tray (creates mirror effect on glass)



Pictured - Natural Slate Grey close up



## Wave Tile

Supplied in 2000H x 1200W x 3.2mm thick sheets.

Vertical Tile Design with textured Natural finish

Available in Natural White, Natural Grey and Natural Black which colour matches to trays.

Easy-clean, finish with no grout or exposed silicone joints to collect dirt or create mould zones.

Supplied in complete "upgrade kits" for your Symphony shower cubicle, or as individual sheets.

## Ordering Codes

### UPGRADE KITS

#### For Shower Sizes UP TO 1200x1000

PWALLUGWAVEGREY2S	2 sided shower grey WAVE
PWALLUGWAVEGREY3S	3 sided shower grey WAVE
PWALLUGWAVEWH2S	2 sided shower white WAVE
PWALLUGWAVEWH3S	3 sided shower white WAVE

#### For Shower Sizes 1400x900 and above

PWALLUGWAVEGREY2SLARGE	2 sided shower grey WAVE
PWALLUGWAVEGREY3SLARGE	3 sided shower grey WAVE
PWALLUGWAVEWH2SLARGE	2 sided shower white WAVE
PWALLUGWAVEWH3SLARGE	3 sided shower white WAVE

### INDIVIDUAL SHEETS

PWALLWAVEGY	1200wx2000h Grey Wave sheet
PWALLWAVEWH	1200wx2000h White Wave sheet



Pictured - 900x1200x900 Alcove installation  
WAVE tile grey



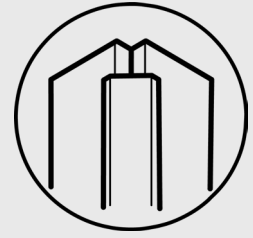
Pictured - Wave tile white

## Components

### Internal Corner Joiner

Available in 2m Lengths  
Code is for one unit

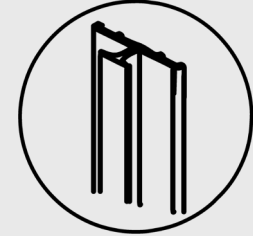
PWALLCORNERGREY	Corner wall joiner Grey
PWALLCORNERBLK	Corner wall joiner Black
PWALLCORNERWH	Corner wall Joiner White



### Straight Joiner

Available in 2m Lengths  
Code is for one unit

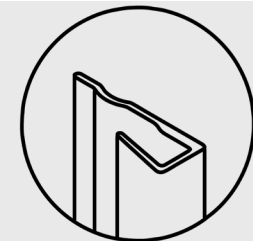
PWALLSTRAIGHTGREY	Straight wall joiner Grey
PWALLSTRAIGHTBLK	Straight wall joiner Black
PWALLSTRAIGHTWH	Straight wall joiner White



### Edge Cap

Available in 2m Lengths  
Code is for one unit

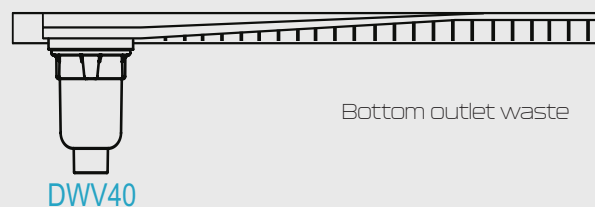
PWALLEDGEGREY	Wall edge cap Grey
PWALLEDGEBLK	Wall edge cap Black
PWALLEDGEWH	Wall edge cap White



## EASY CLEAN WASTE

Pinnacle trays are supplied STANDARD with a side outlet easy clean waste. A bottom outlet waste is an option. This waste is specific to Pinnacle trays.

Please specify SKU - BOTTOMEXIT when ordering.



# Warranty

## 10 years :

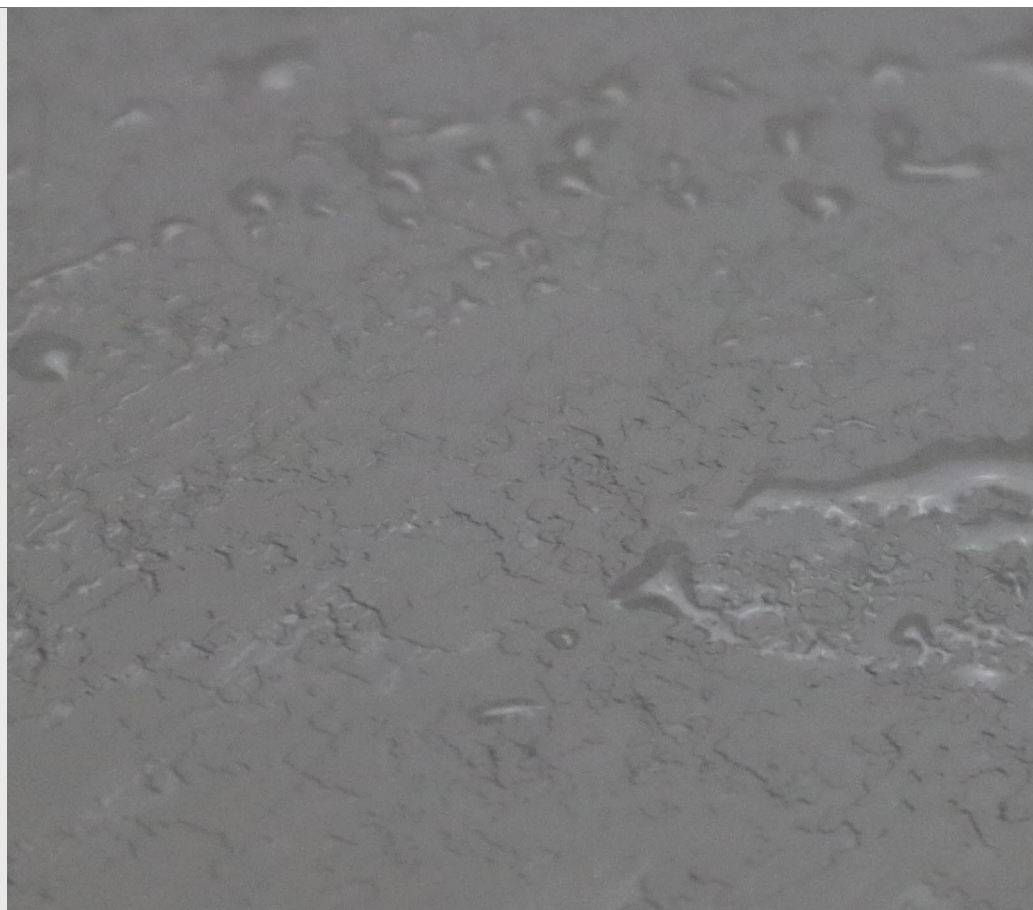
- Trays, Black, Grey, White
- Liner
- Glass
- Silva finish frames / hinges and hardware
- Seals / rollers

## 5 years :

- Black finish frames / hinges and hardware
- **Marble Finish Trays**

## 7 years :

- Easy Clean wastes



## INSTALLATION

It is **HIGHLY** recommended to engage a competent installer for peace of mind. Most installers offer a full warranty on their workmanship. Remember if your Symphony Shower is installed incorrectly, this could lead to not only a void product warranty, but also expensive damage to the building structure if hidden leaks occur.

If you are combining your new Pinnacle tray with tiled walls, you must consult with your local council in relation to required consents. Additionally, a PS1 certified waterproofing installer must carry out all waterproofing work.

The same consideration must be taken when floor tiles are installed adjacent to a shower tray with no door system (walk in shower).

## CLEANING

Please refer to our cleaning guide for specific cleaning instructions.

## MANUFACTURED WITH PRIDE

Fibre Systems have been manufacturing, designing and importing showers for the New Zealand market since 1986. We are a 100% New Zealand owned and operated family business, and we specialise in showers.

Our latest tray, the Pinnacle, brings us closer to the ultimate showering experience, where the natural look and feel of stone combines with the reliability of an acrylic cubicle.

DESIGNED AND  
ENGINEERED BY

